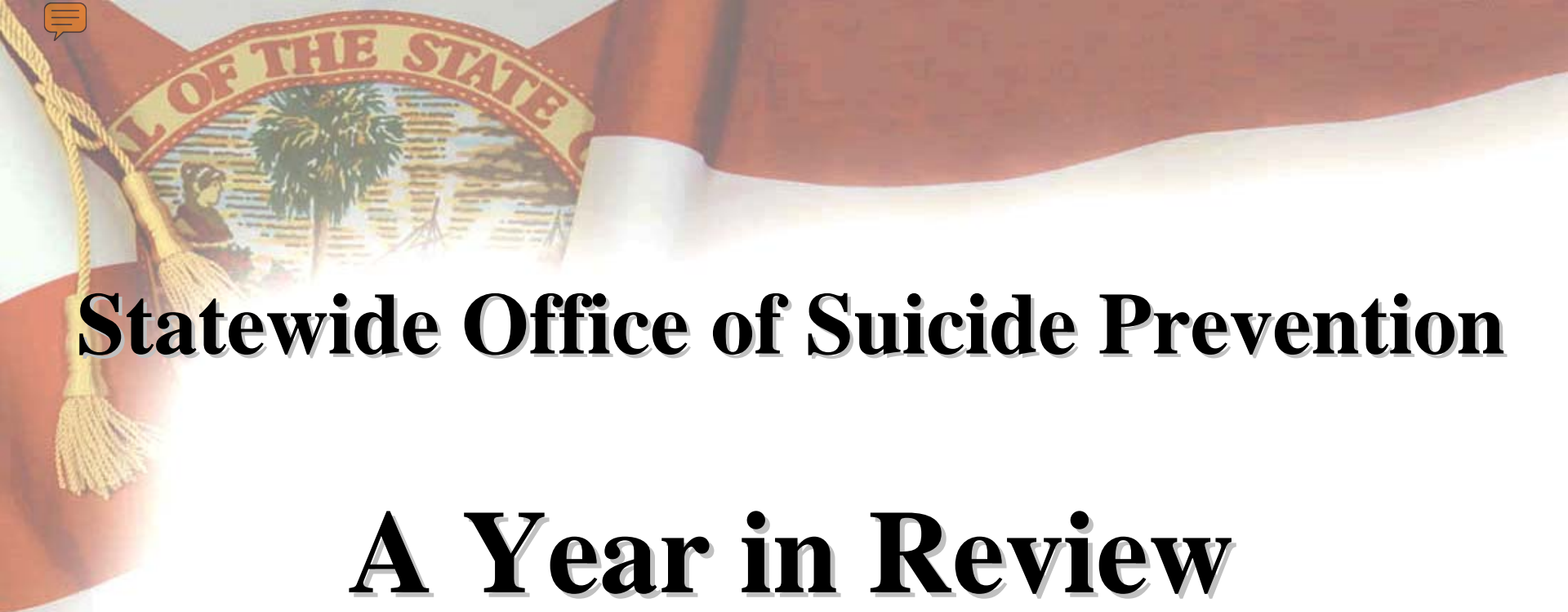




William H. Janes

Florida Office of Drug Control
Statewide Office of Suicide Prevention



Statewide Office of Suicide Prevention

A Year in Review

www.HelpPromoteHope.com

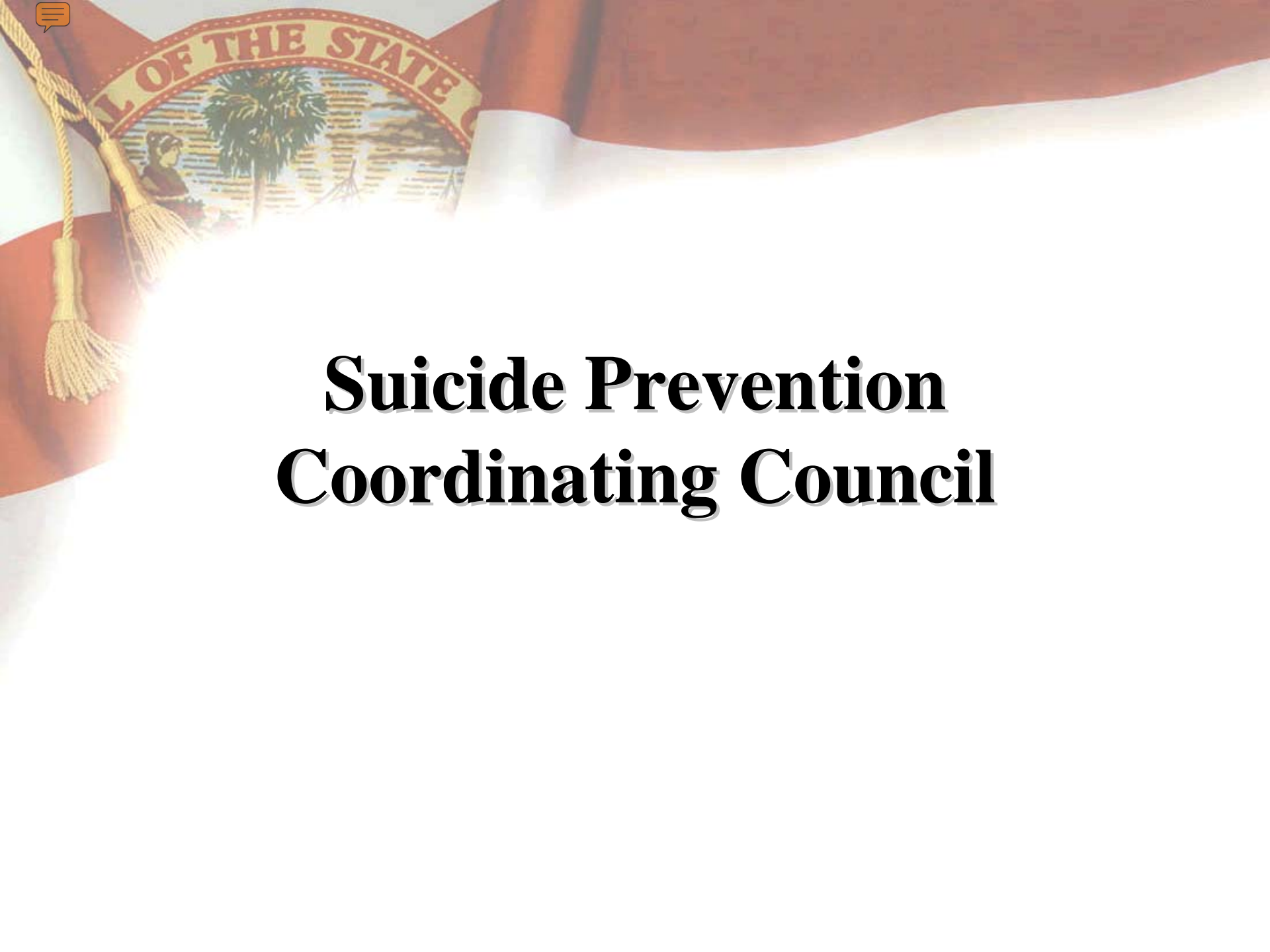
The background of the slide is the Florida state flag, featuring a red field with a white saltire and a central seal. The seal depicts a Seminole woman with a palm tree and a ship. A gold tassel is visible on the left side of the flag.

Statewide Office of Suicide Prevention

§ 14.2019, F.S.

Mission:

In collaboration with the Suicide Prevention Coordinating Council, the Statewide Office of Suicide Prevention shall develop and implement the *Florida Suicide Prevention Strategy* statewide and assist communities in carrying out suicide prevention efforts locally.



Suicide Prevention Coordinating Council

The background of the slide features the Florida State Seal, which includes a palm tree, a sun, and a figure, with the text "ALL OF THE STATE" in an arch above it. The seal is partially obscured by the title text.

The Role of the Statewide Office of Suicide Prevention

- Build Collaboration and Facilitate Cooperation
- Develop Strategy
- Seek Funding
- Create Policy
- Additional Activities and Resources

A red and white banner with a gold tassel is visible in the upper left corner. The banner features the text "ALL OF THE STATE" in gold letters. Below the text is a circular emblem depicting a palm tree, a person, and a ship. The background of the slide is a gradient from white to light blue.

**Build Collaboration
&
Facilitate Cooperation**

"Transforming Communities and Lives"

The background of the slide features a close-up of the Florida state flag, showing the red and white stripes and the central seal. A gold tassel is visible on the left side. The seal depicts a Seminole woman, a palm tree, and a ship, with the words "ALL OF THE STATE" visible in an arch above the scene.

Current Collaborative Efforts

Florida Suicide Prevention Implementation Project

Florida Mental Health Institute, University of South Florida

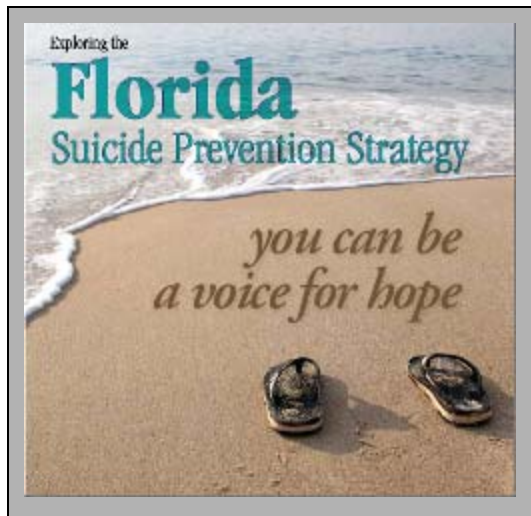
<http://preventsuicide.fmhi.usf.edu/>

The background of the slide features a large, stylized image of the Florida State Seal, which includes a palm tree, a sun, and a figure, surrounded by the text "ALL OF THE STATE". To the left, a portion of a graduation cap with a gold tassel is visible.

Current Collaborative Efforts

- Florida Department of Veterans' Affairs: Veterans Initiative
- Florida Psychiatric Society and NAMI FL: Medication Adherence Project
- Department of Education: Well Aware Campaign
- Department of Correction: Educational Campaign for employees
- MySpace webpage and ads at local movie theaters

Develop Strategy



Florida Suicide Prevention Strategy

2005-2010



Office of Drug Control
Executive Office of the Governor
State of Florida



Create Policy



Seek Funding



Additional Activities & Resources



The background of the slide features the Florida State Seal, which includes a palm tree, a sun, and a figure, with the text "ALL OF THE STATE" visible. A graduation cap is also partially visible on the left side.

General Statistics

- Suicide is America's 11th leading cause of death with over 32,000 deaths each year (90 lives lost per day; 1 every 16 minutes)
- In 2007, there were 2,570 suicides in Florida (over 7 per day)
- Suicide is continuously a top 10 leading cause of death in Florida
- Florida's suicide rate is double the homicide rate
- Florida's suicide rate in 2007 was 13.7 per 100,000 - higher than the national average rate of 10.83 (2005)



Youth

- 3rd leading cause of death for ages 10-24
- 2nd leading cause of death for American college students

Adults

- Highest number of suicides
- 2nd leading cause of death among ages 25-34
- In 2007, approximately 69% of all suicides were among ages 25-64

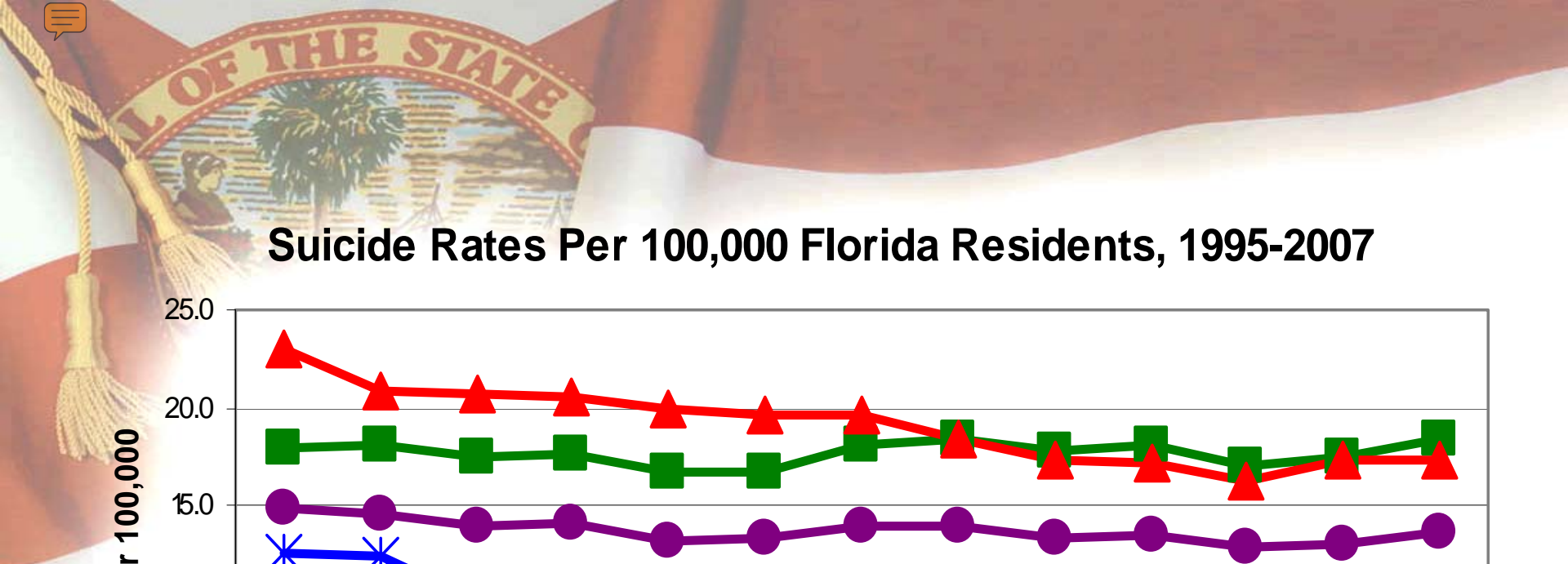
Elderly

- Comprise 12% of population and account for 18% of nation's suicides
- Suicide rate is six times the national average among this population

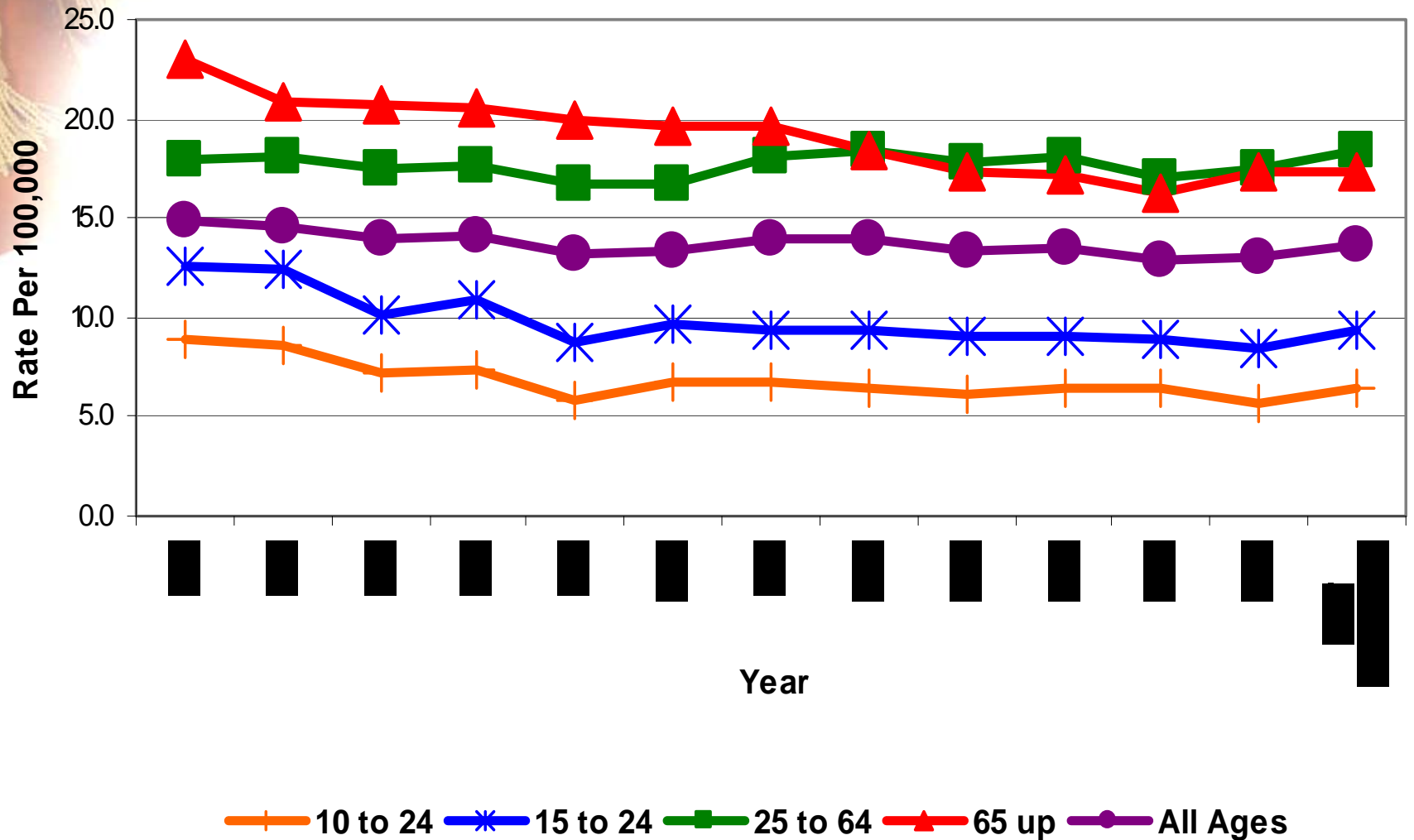
The background of the slide features the Florida State Seal, which includes a palm tree, a woman, and the text "ALL OF THE STATE".

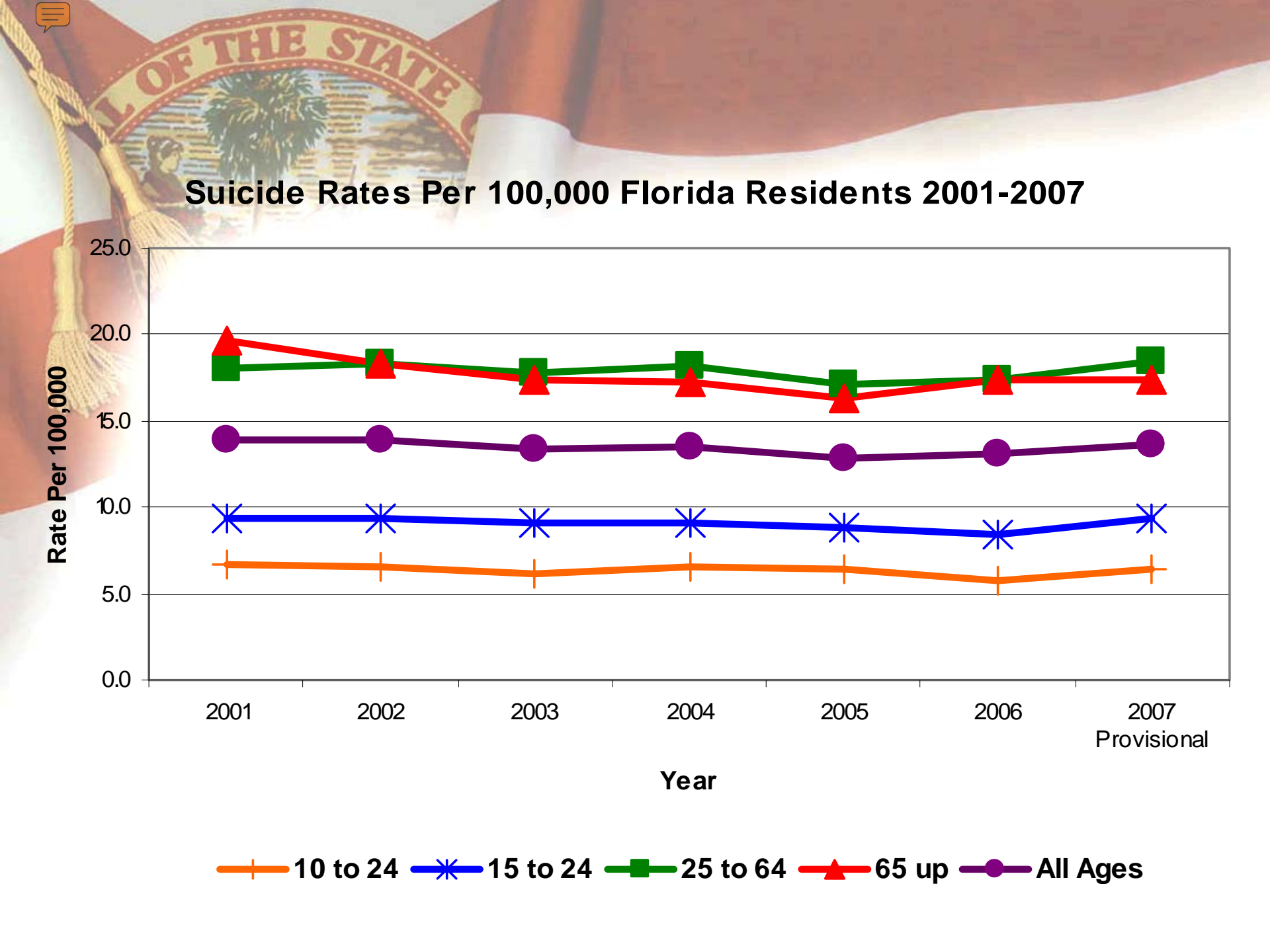
Special Populations

- At least 144 suicides by OEF/OIF war Vets (2002-2005)
- 508 total active duty deaths since beginning of OEF/OIF
- Among female vets their suicide rate is twice that of the normal population

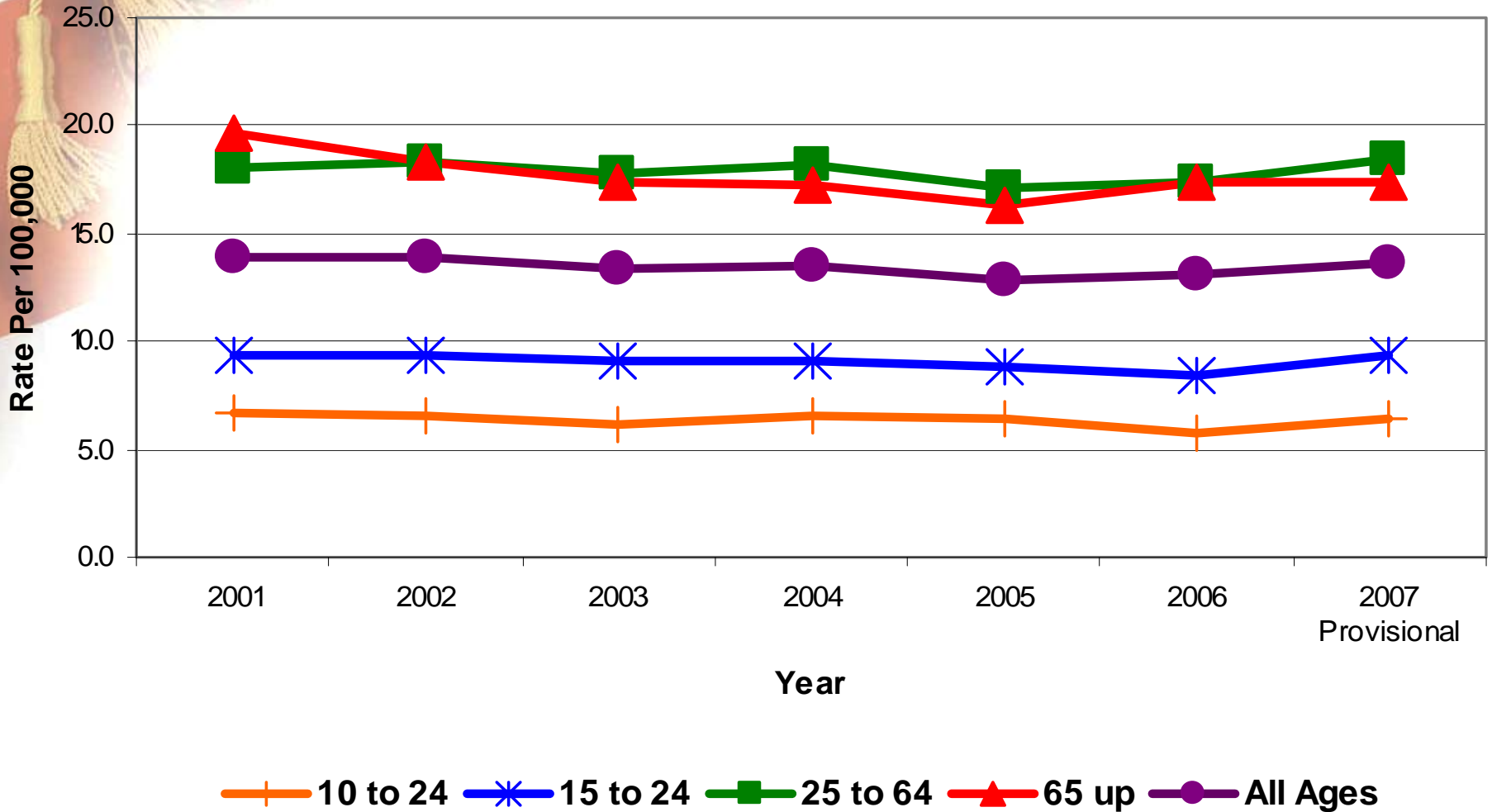


Suicide Rates Per 100,000 Florida Residents, 1995-2007





Suicide Rates Per 100,000 Florida Residents 2001-2007





Looking to the Future

The background of the image is the Florida state flag, featuring a red field with a white saltire (St. Andrew's cross) and a central emblem. The emblem depicts a Seminole woman with a bow and arrow, a palm tree, and a ship on the water. A banner above the emblem reads "GREAT FLORIDA SEMINOLE WAR".

www.HelpPromoteHope.com

Suite 2105, The Capitol
Tallahassee, Florida 32399

Bill.Janes@MyFlorida.com
(850) 488-9557

Erin.MacInnes@MyFlorida.com
(850) 922-0498