

**William H. Janes**

Florida Office of Drug Control  
Statewide Office of Suicide Prevention

The background of the slide features the Florida State Seal, which is a circular emblem containing a palm tree, a sun, and a figure. Above the seal is a banner with the text "ALL OF THE STATE". The seal is set against a red and white background that resembles the Florida state flag.

# Statewide Office of Suicide Prevention

§ 14.2019, F.S.

## Mission:

In collaboration with the Suicide Prevention Coordinating Council, the Statewide Office of Suicide Prevention shall develop and implement the *Florida Suicide Prevention Strategy* statewide and assist communities in carrying out suicide prevention efforts locally.

The background of the slide features the Florida State Seal, which includes a palm tree, a sun, and a banner with the text "ALL OF THE STATE".

# Statewide Office of Suicide Prevention

## **Vision:**

Suicide is a complex yet preventable public health problem. A coordinated strategy and effort are critical in reducing suicide. A centralized structure is necessary to integrate the statewide effort and provide a unified direction but success in suicide prevention depends on empowerment at the local level. An infrastructure built on cooperation between the federal, state, and community level is essential for comprehensively combating this problem. Through these partnerships, we will be able to increase existing suicide prevention capacity and promote collaborative action.

The background of the slide features a large, semi-transparent image of the Florida State Seal. The seal is circular and contains a palm tree, a sun, and a figure. Above the seal is a banner with the text 'ALL OF THE STATE'. The seal is set against a red and white background that resembles a flag.

# **The Role of the Statewide Office of Suicide Prevention**

- Build Collaboration and Facilitate Cooperation
- Develop Strategy
- Seek Funding
- Create Policy
- Additional Activities and Resources

The background of the slide features a close-up of the Florida State Seal, which includes a palm tree, a ship, and a figure, with the text 'ALL OF THE STATE' visible. A gold tassel is also visible on the left side.

**Build Collaboration  
&  
Facilitate Cooperation**

*“Partnerships for Saving Lives”*

The background of the slide features the Florida state flag, which is red with a white saltire (St. Andrew's cross). In the center of the cross is a circular seal depicting a woman holding a scale, a palm tree, and a ship. Above the seal, the words "ALL OF THE STATE" are written in a curved banner. The flag is shown with a gold tassel on the left side.

# Current Collaborative Efforts

- Florida Mental Health Institute – Florida Suicide Prevention Implementation Project
- Department of Education – Well Aware Campaign
- Department of Correction – Educational Campaign for employees
- Suicide Prevention Action Network (SPAN) – advocate for good policy on the federal level
- Wrapping up Suicide Prevention Social Marketing Pilots -comprehensive strategies to reduce suicide and change social norms among youth, elder and law enforcement populations



# Develop Strategy

## Florida Suicide Prevention Strategy

2005-2010



**Office of Drug Control**  
Executive Office of the Governor  
State of Florida



# Create Policy



The top portion of the image features the Florida state flag, which is red with a white saltire. In the center is a circular emblem depicting a Seminole woman with a palm tree and a ship. A gold tassel is visible on the left side of the flag.

**Seek Funding**





# Additional Activities & Resources



The background of the slide features a close-up of the Florida State Seal. The seal is circular and contains a central figure of a woman holding a scale, with a palm tree and a ship in the background. The words "ALL OF THE STATE" are visible in an arch above the central scene. The seal is set against a red and white background that resembles the Florida state flag. A gold tassel is visible on the left side of the seal.

# **Suicide Prevention Coordinating Council**

The background of the slide features the Florida state flag, which is red with a white saltire (St. Andrew's cross). In the center of the cross is a circular emblem depicting a Seminole woman with a bow and arrow, a palm tree, and a sunset over water. A gold tassel is visible on the left side of the flag.

# General Statistics

- Suicide is America's 11<sup>th</sup> leading cause of death with over 30,000 deaths each year
- In 2006, there were 2,410 suicides in Florida (over 6 per day)
- Suicide is continuously a top 10 leading cause of death in Florida
- Florida's suicide rate is double the homicide rate
- Florida's suicide rate in 2006 was 13.1 per 100,000 - higher than the national average rate of 10.83



## **Youth**

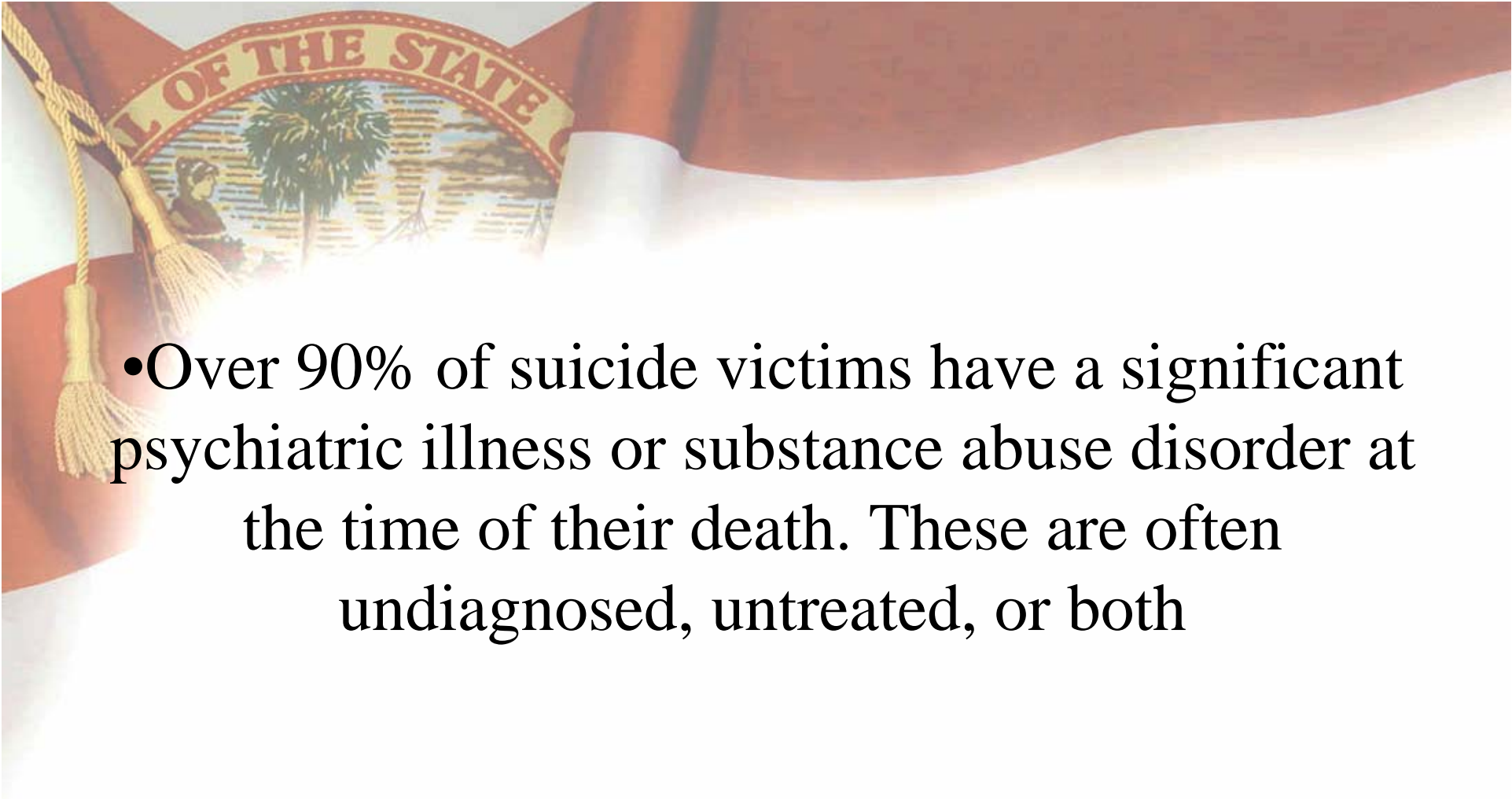
- 3<sup>rd</sup> leading cause of death for ages 10-24
- 2<sup>nd</sup> leading cause of death for American college students

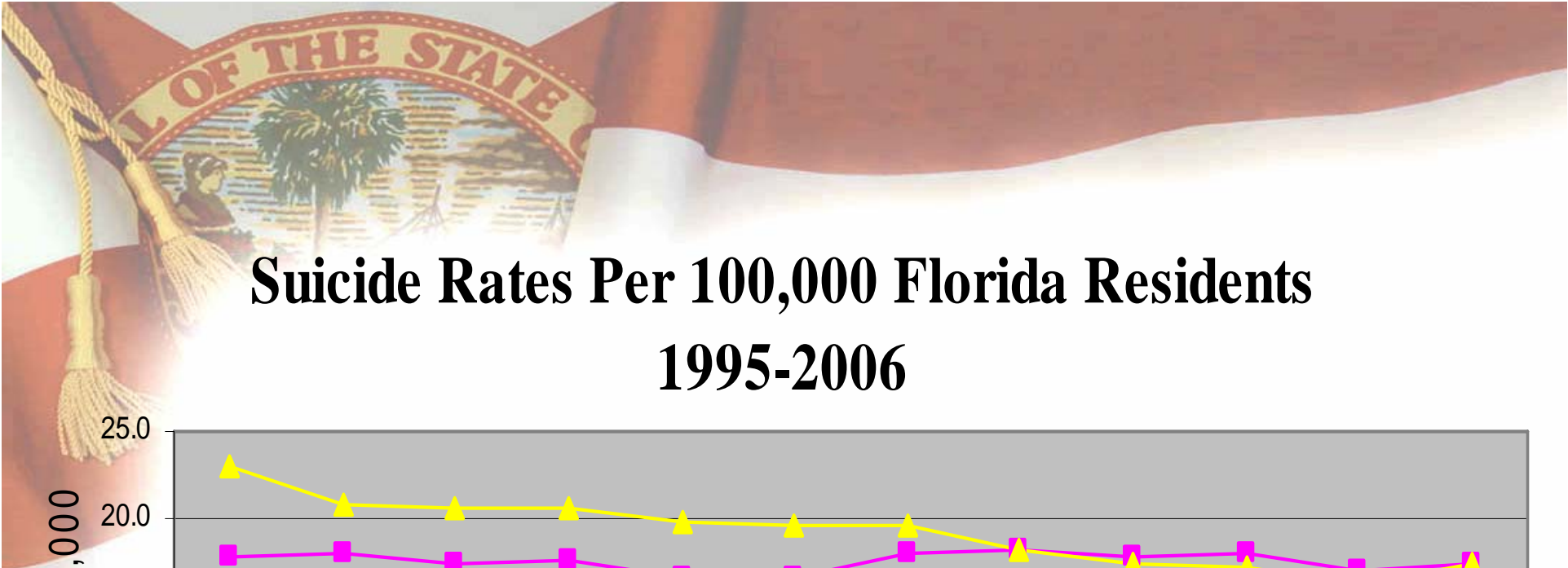
## **Adults**

- Highest number of suicides
- 2<sup>nd</sup> leading cause of death among ages 25-34
- In 2005, approximately 69% of all suicides were among ages 25-64

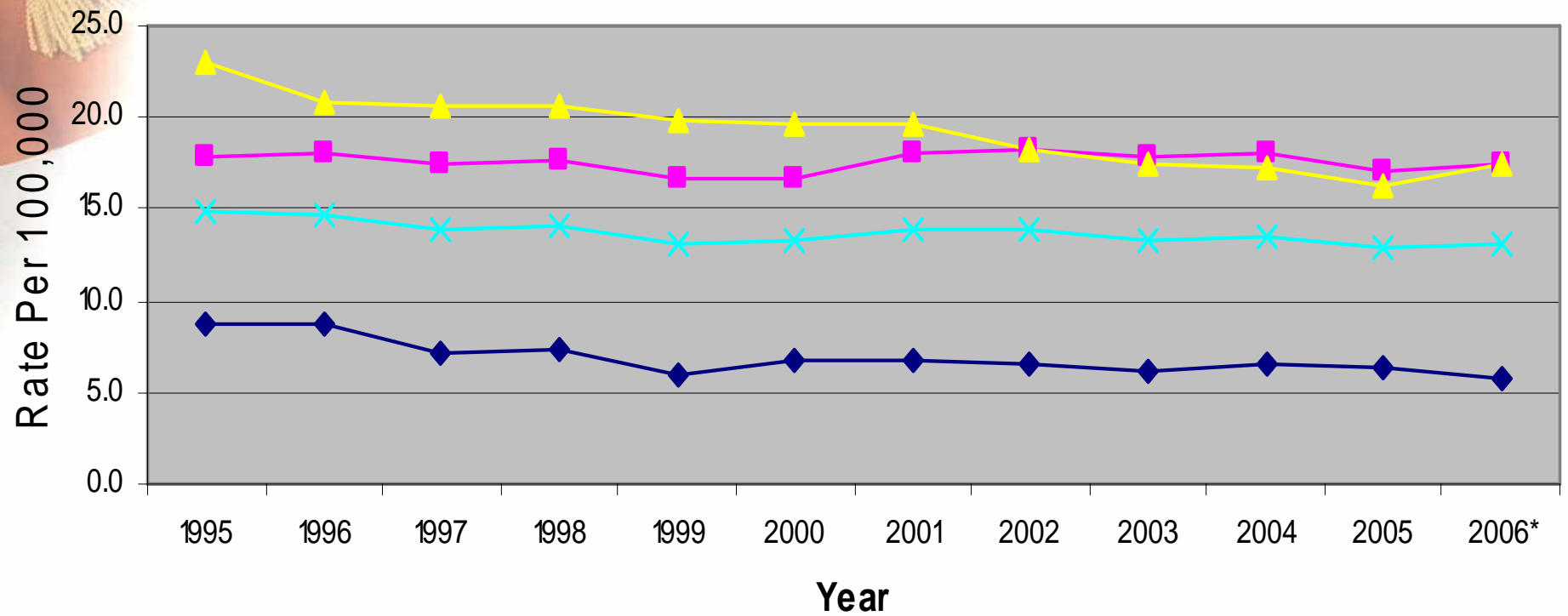
## **Elderly**

- Comprise 12% of population and account for 18% of nation's suicides
- Suicide rate is six times the national average among this population

- 
- The background of the slide features a large, semi-transparent image of the Florida State Seal. The seal is circular and contains a central figure of a woman holding a scale, with a palm tree and a ship in the background. The words "ALL OF THE STATE" are visible in an arch at the top of the seal. The seal is set against a background of the Florida state flag, which is red and white with a white cross in the center.
- Over 90% of suicide victims have a significant psychiatric illness or substance abuse disorder at the time of their death. These are often undiagnosed, untreated, or both

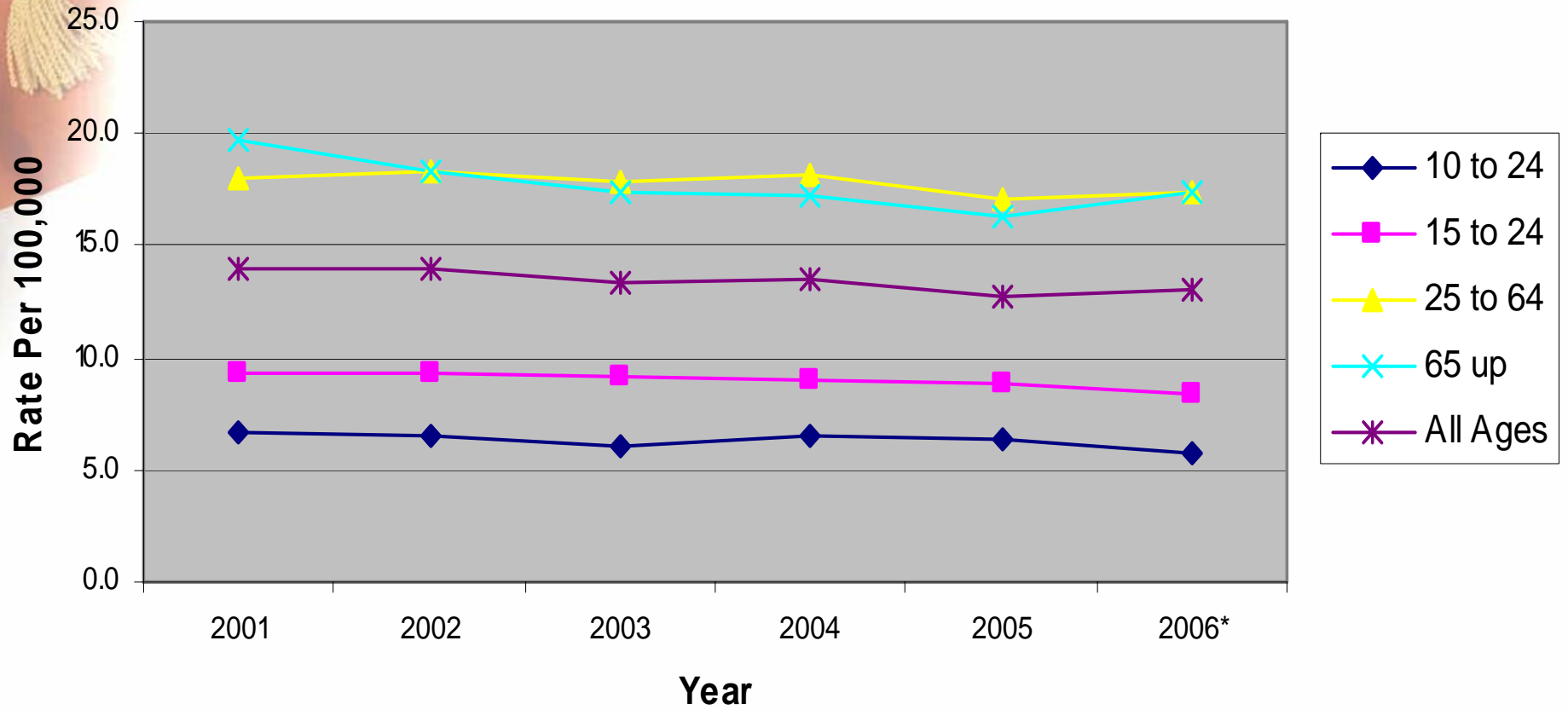


# Suicide Rates Per 100,000 Florida Residents 1995-2006



◆ 10 to 24    ■ 25 to 64    ▲ 65 up    ✕ All Ages

# Suicide Rates Per 100,000 Florida Residents 2001-2006



The background of the slide features the Florida State Seal, which is a circular emblem containing a palm tree, a sun, and a figure. Above the seal is a banner with the text "ALL OF THE STATE". The seal is set against a red and white background that resembles the Florida state flag.

## Reduction Needed to Reach 2010 Goal

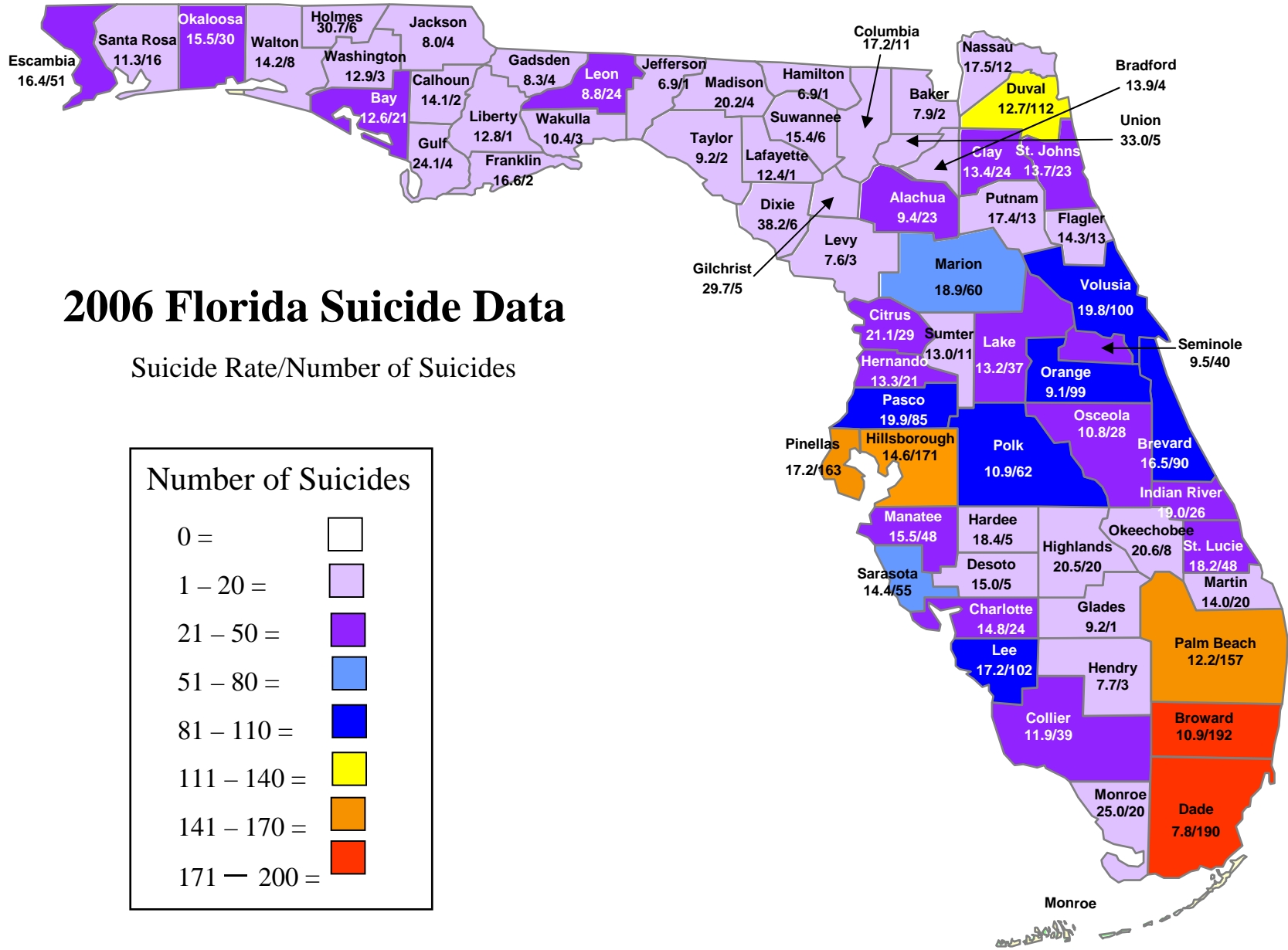
Ages 10-24: 18.4% reduction

Ages 15-24: 23% reduction

Ages 25-64: 29.9% reduction

Ages 65+: 21.8% reduction

All Ages: 27% reduction





**CDC Report Shows Largest One-Year Increase in Youth Suicide Rate in 15 Years**

The background of the slide features a large, semi-transparent image of the Florida State Seal. The seal is circular and contains a central figure of a woman holding a scale, with a palm tree and a ship in the background. Above the seal, the words "ALL OF THE STATE" are written in a curved banner. The seal is set against a background of the Florida state flag, which is red and white with a gold tassel on the left side.

# Recommended Actions for Individuals

- Learn to recognize and respond to the warning signs of suicide
- Become involved in suicide prevention activities in your state
- Learn about creating and implementing suicide prevention programs
- Support suicide prevention policies and funding
- Contact a Suicide Prevention Resource Center Specialist to get you connected with people, organizations, and resources

The background of the slide features the Florida State Seal, which includes a palm tree, a sun, and a figure, surrounded by the text "ALL OF THE STATE".

**[www.flgov.com/drug\\_control](http://www.flgov.com/drug_control)**  
**[http://www.flgov.com/suicide\\_prevention](http://www.flgov.com/suicide_prevention)**

Suite 2105, The Capitol  
Tallahassee, Florida 32399

[Bill.Janes@MyFlorida.com](mailto:Bill.Janes@MyFlorida.com)  
(850) 488-9557

[Erin.MacInnes@MyFlorida.com](mailto:Erin.MacInnes@MyFlorida.com)  
(850) 922-0498

**Power Point available at:**  
**[www.preventioninflorida.org](http://www.preventioninflorida.org)**