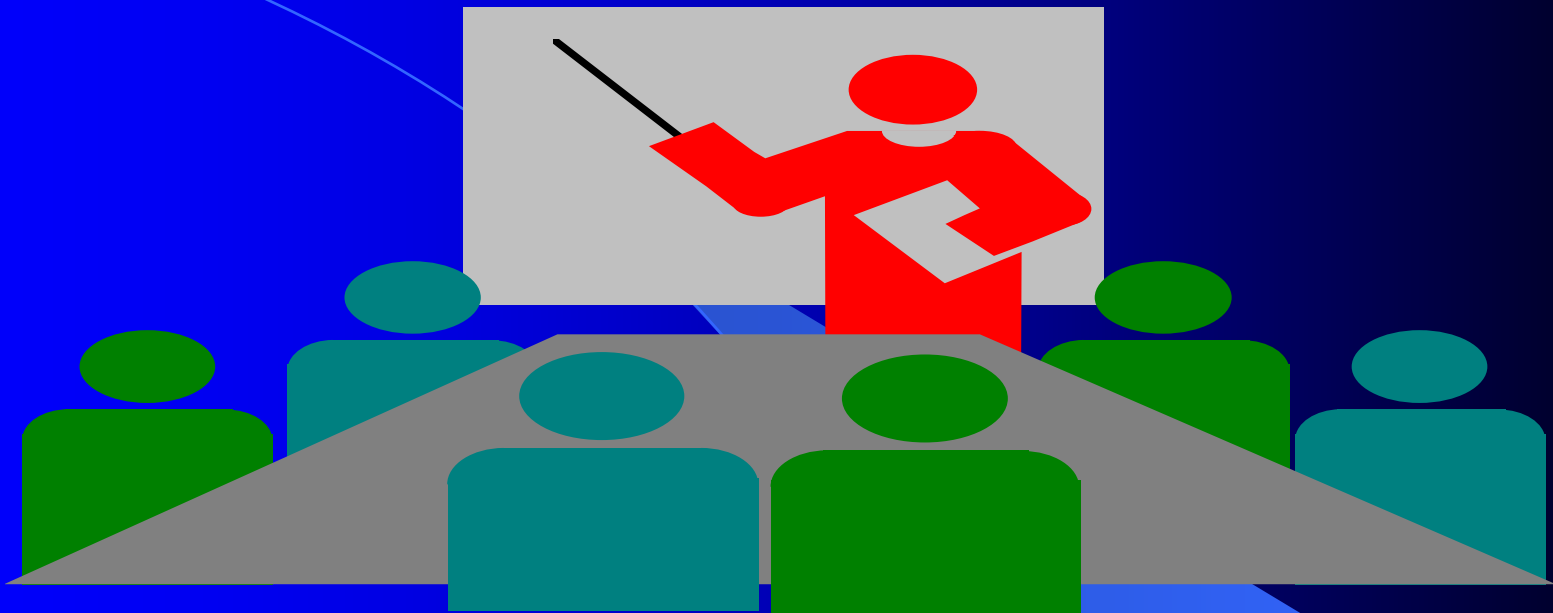
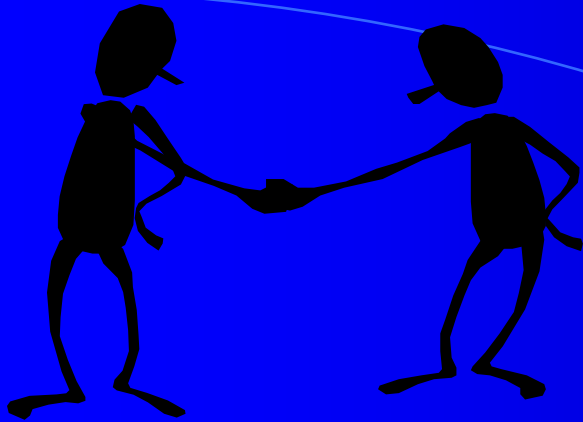


PREVENTING TEEN SUICIDE IN RESIDENTIAL SETTINGS



STRATEGIES, POLICIES, STAFF TRAINING
AND BEST PRACTICES



Introduction

- ◉ Department of Juvenile Justice
- ◉ Florida Network of Youth and Family Services
- ◉ Training and Technical Assistance
- ◉ Suicide Incident
- ◉ Findings and outcomes

Agenda

- Understand suicide risk in residential settings (where, when , how and why)
- Identify specific prevention strategies.
- Define the role of policy and procedures.
- Identify staff training needs and issues.
- Recognize the need for mental health, substance abuse and suicide risk screening instruments and protocols.
- Conduct risk assessments and emergency drills using case scenarios.



Overview

- Environmental Safety.
- Assessment and service planning process.
- Policies, procedures and practices.
- Staff communication and alert systems
- Staff training and emergency drills.

Environmental Safety

- Supervision of youth
- Areas of isolation and seclusion
- Key control and limiting access
- Safety inspections
- Safety Committee
- Video monitoring
- Placement of youth in care

Assessment and Service Planning Process

- Presenting problems and case planning
- Residential placement considerations
- Service linkage and referrals
- Assessment process and tools
- Case study small group exercise
- Supervisory review and case staffing

Policies and Procedures

- Mental Health, substance abuse and suicide risk screening
- Medical and Mental Health follow-up
- Crisis intervention expectations
- Documentation and confidentiality
- First aid kits and emergency equipment
- Disaster planning and incident reporting

Staff Communication and Alert Systems

- Communication between staff at all levels and across the 24/7/365 service delivery
- Medical and Mental Health Alert Systems
- Multiple and redundant communication methods and strategies
- Accountability and testing of the system
- Logs, clients files and shift change process

Staff Training and Emergency Drills

- Orientation Training
- Suicide Risk Response training
- Mental Health and Substance Abuse training
- CPR/First Aid training
- Quarterly Emergency Drills



Summary

- Suicide is preventable
- Environmental Safety
- Assessment and Service Planning
- Policies and Procedures
- Staff communications
- Staff training and emergency drills