

# Pasco County

## Suicide Prevention Summary Statistics

### Suicides, 2000-2006

#### Pasco County Profile <sup>(1)</sup>

- Population estimated to be 434,425, a 26% increase. (2000-2007)
- 20.9% of 2006 population was under 18 years of age; 24.1% was over age 64.
- Per capita personal income was \$27,476. (2006)
- Residents living below the poverty level: 11.3% all ages; 15.5% ages 0-17. (2005)
- Unemployment rate was 4.8%. (2007)
- Largest employment categories were trade, transportation and utilities (22%), education and health services (16.6%), government (16%), leisure and hospitality (11.8%), and construction (10.6%). (2007 preliminary).

#### Countywide <sup>(2)</sup>

- 396 deaths by suicide (2000-2005); average of 66 deaths by suicide each year.
- 8<sup>th</sup> leading cause of death. (2006)
- 2006 crude suicide rate: 19.9 per 100,000; age-adjusted\* suicide rate: 19.0 per 100,000.
- 11<sup>th</sup> highest number among Florida counties. (2006)
- Three times as many deaths by suicide as deaths from homicide (2006).

#### Age <sup>(3)</sup>

- 45-54 years: highest crude rate (2000-05) 31.1 per 100,000; 23% of suicides.
- 35-44 years: next highest crude rate (2000-05) 25.4 per 100,000; 21% of suicides.
- 25-34 years: next highest crude rate (2000-05) 21.7 per 100,000; 14% of suicides.
- 10-19 years: lowest suicide rate 3.4 per 100,000; 2% of suicides.

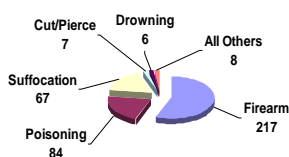
#### Gender <sup>(3)</sup>

- Males: 302 deaths by suicide (2000-05); 77.6% of suicides; crude rate 27.2 per 100,000.
- Females: 87 deaths by suicide (2000-05); 22.4% of suicides; crude rate 7.3 per 100,000.
- Ratio of male to female deaths by suicide: 3.5:1 (00-05).

#### Race/Ethnicity <sup>(3)</sup>

- White: 98.2% of suicides (2000-05): crude rate 17.4 per 100,000.
- Black or African American: 1.3 % of suicides (2000-05); crude rate 7.5 per 100,000.
- Other Race: .5 % of suicides; crude rate 4.7 per 100,000.
- Hispanic: 1.5% of suicides (2000-05). <sup>(2,3)</sup>

Suicide Deaths by Mechanism, Pasco County (2000-2005)



#### Method 2000-05 <sup>(3)</sup>

- Firearm: leading method (55.8%); crude rate 9.4 per 100,000.
- Poisoning: 2<sup>nd</sup> leading method; crude rate 3.6 per 100,000.
- Suffocation: 3<sup>rd</sup> leading method; crude rate 2.9 per 100,000.
- Cut/Pierce, Drowning, Fall, Fire/Flame, Other: least used methods; crude rate 0.1-0.3 per 100,000. <sup>(4)</sup>

\* The age-adjusted death rate is a summary measure that eliminates the effect of the underlying age distribution of the population. The result is a figure that represents the theoretical risk of mortality for a population, if the population had an age distribution identical to that of a standard population. (Florida CHARTS)

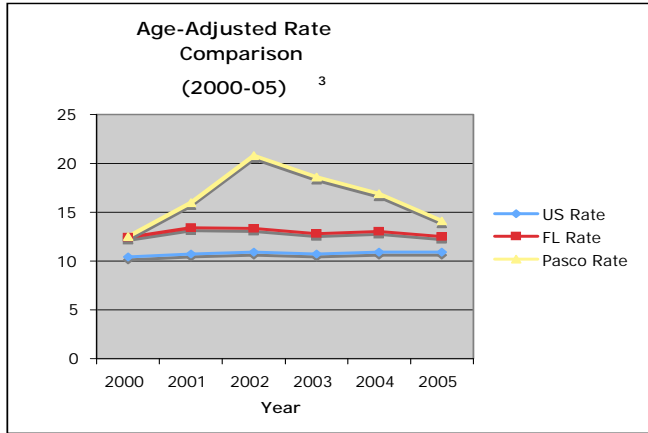


Contact: Dave Chamberlin, [dachambe@pasco.k12.fl.us](mailto:dachambe@pasco.k12.fl.us)

Reports and Newsletters: <http://preventsuicide.fmhi.usf.edu/communitiesinaction.cfm>

Prepared by  
 UNIVERSITY OF SOUTH FLORIDA

Louis de la Parte Florida Mental Health Institute, University of South Florida, MHC 2406, 13301 Bruce B. Downs Blvd., Tampa, FL 33612-3699, Website: <http://preventsuicide.fmhi.usf.edu>



### Ranking <sup>(2,3)</sup>

- Florida ranked 18<sup>th</sup> in the nation with a crude rate of 13.2 per 100,000. (2005)
- Pasco County ranked tied for 9<sup>th</sup> among Florida counties with an age-adjusted rate of 19 per 100,000. (2006)

### 2000-05 Crude Rate Comparison <sup>(2,3)</sup>

- US: 10.84
- Florida: 13.62
- Pasco County: 16.9

Age-Range	2001	2002	2003	2004	2005	2006
10-14	1	1	0	0	0	0
15-19	2	1	1	2	1	2
20-24	2	7	4	2	1	8
25-34	11	18	8	7	8	8
35-44	7	15	20	15	13	12
45-54	16	9	17	22	17	17
55-64	5	12	7	8	7	22
65-74	8	5	9	6	7	12
75-84	3	6	2	7	8	3
85+	2	3	5	2	3	1
<b>Total</b>	<b>57</b>	<b>77</b>	<b>73</b>	<b>71</b>	<b>65</b>	<b>85</b>

Year	Deaths by Suicide <sup>(3)</sup>		Age-Adjusted Rate per 100,000 <sup>(3)</sup>	
	Male	Female	Male	Female
2000	38	10	20.4	5.3*
2001	44	13	24.7	7.9*
2002	57	19	32.7	9.4*
2003	57	15	30.6	7.2*
2004	55	16	27.3	7.1*
2005	51	14	23.1	5.6*
<b>AVG</b>	<b>50.3</b>	<b>14.5</b>		

\*Unreliable: rate is calculated with a numerator of 20 or less

	Florida	U.S.
Seriously considered attempting suicide	11.2%	14.5%
Made a suicide plan	8.1%	11.3%
Attempted suicide	5.7%	6.9%
Suicide attempt required medical attention	2.1%	2.0%

Mechanism	0-14	15-24	25-34	35-44	45-54	55-64	65-74	75-84	85+	Total
Cut/Pierce	1	2	0	3	6	3	0	0	0	15
Firearm	0	0	0	1	0	0	0	0	0	1
Fall	0	1	0	0	0	0	0	0	0	1
Poisoning	8	72	80	83	97	37	15	10	2	404
Suffocation	0	0	0	1	1	0	0	0	0	2
<b>Total</b>	<b>5</b>	<b>57</b>	<b>66</b>	<b>80</b>	<b>85</b>	<b>31</b>	<b>6</b>	<b>6</b>	<b>1</b>	<b>430*</b>

\* Column total does not match Total as not all Mechanism categories are listed.

- Office of Economic and Demographic Research, Florida Legislature, extracted 9-12-08 from <http://edr.state.fl.us/population.htm>, County Profiles.
- Florida Office of Vital Statistics, CHARTS, extracted 9/12/08 from <http://www.floridacharts.com/charts/>
- Centers for Disease Control and Prevention, National Center for Health Statistics. Compressed Mortality File 1999-2005. CDC WONDER On-line Database, compiled from Compressed Mortality File 1999-2005, extracted 9/12/08.
- Florida Vital Statistics Annual Report 2000-2006, Table D-11, extracted 8-5-08.
- Youth Risk Behavior Surveillance, CDC 2008.
- Florida Department of Health, Office of Injury Prevention, extracted 9/10/08.