

Duval County

Suicide Prevention Summary Statistics

Suicides, 2000-2006

Duval County Profile ⁽¹⁾

- Population estimated to be 897,597, a 15% increase. (2000-2007)
- % of 2006 population was under 18 years of age; 24.1% was over age 64.
- Per capita personal income was \$36,616. (2006)
- Residents living below the poverty level: 12.1% all ages; 16.3% ages 0-17. (2005)
- Unemployment rate was 4.1%. (2007)
- Largest employment categories were trade, transportation and utilities (22.1%), professional and business services (15.6%), education and health services (12.8%), financial activities (11.4%) government (11.2%), and leisure and hospitality (9.1%). (2007 preliminary).

Countywide ⁽²⁾

- 680 deaths by suicide (2000-2005); average of 113.3 deaths by suicide per year.
- 10th leading cause of death. (2006)
- 2006 crude suicide rate: 12.7 per 100,000; age-adjusted* suicide rate: 12.6 per 100,000.
- 6th highest number among Florida counties. (2006)
- 82 more deaths by suicide than deaths from homicide (2000-05).

Gender ⁽³⁾

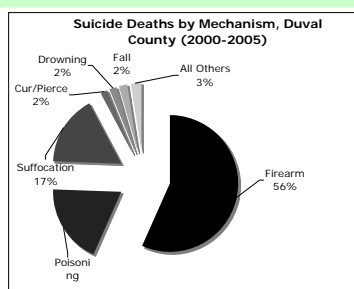
- Males: 533 deaths by suicide (2000-05); 77.8% of suicides; crude rate 22.8 per 100,000.
- Females: 152 deaths by suicide (2000-05); 22.2% of suicides; crude rate 6.1 per 100,000.
- Ratio of male to female deaths by suicide: 3.5:1.

Age ⁽³⁾

- 45-54 years: highest crude rate (2000-05) 23.3 per 100,000; 23.1% of suicides.
- 75-84 years: next highest crude rate (2000-05) 23.2 per 100,000; 6.0% of suicides.
- 20-24 years: next highest crude rate (2000-05) 20.1 per 100,000; 9.6% of suicides
- 35-44 years: next highest crude rate (2000-05) 19.7 per 100,000; 22.5% of suicides.

Race/Ethnicity ⁽³⁾

- White: 87.2% of suicides (2000-05): crude rate 18.5 per 100,000.
- Black or African American: 11.7 % of suicides (2000-05); crude rate 5.6 per 100,000.
- Other Race: 1.2 % of suicides; crude rate 4.4 per 100,000.



Method (2000-05) ⁽³⁾

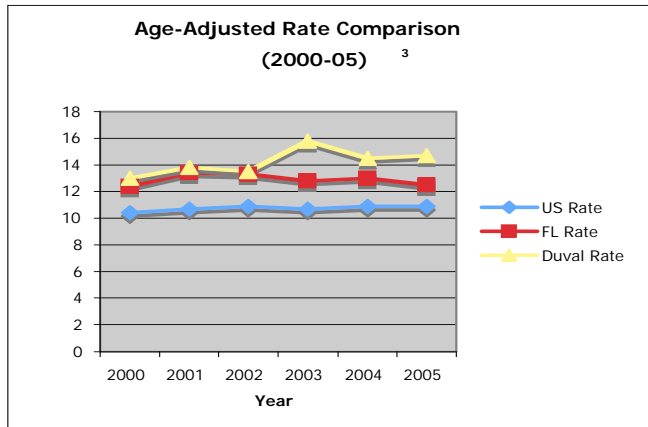
- Firearm: leading method (56.6%); crude rate 8.0 per 100,000.
- Poisoning: 2nd leading method; crude rate 2.7 per 100,000.
- Suffocation: 3rd leading method; crude rate 2.4 per 100,000.
- Cut/Pierce, Drowning, Fall, Fire/Flame, Other: least used methods; crude rate 0.1-0.3 per 100,000. ⁽⁴⁾

* The age-adjusted death rate is a summary measure that eliminates the effect of the underlying age distribution of the population. The result is a figure that represents the theoretical risk of mortality for a population, if the population had an age distribution identical to that of a standard population. (Florida CHARTS)

Contact: *Christine Small*, Mental Health America of Northeast Florida - care@mhjax.org (web <http://www.mhjax.org>)
Reports: <http://jcci.org/Forward/issue%20forums/teen%20suicide.pdf>

Prepared by
 UNIVERSITY OF SOUTH FLORIDA

Louis de la Parte Florida Mental Health Institute, University of South Florida, MHC 2406, 13301 Bruce B. Downs Blvd., Tampa, FL 33612-3699, Website: <http://preventsuicide.fmhi.usf.edu>



Ranking ^(2,3)

- Florida ranked 18th in the nation with a crude rate of 13.2 per 100,000. (2005)
- Duval County ranked 33rd among Florida counties with an age-adjusted rate of 14.1 per 100,000. (2005)

2000-05 Crude Rate Comparison ^(2,3)

- US: 10.84
- Florida: 13.62
- Duval County: 14.2

Age-Range	2001	2002	2003	2004	2005	2006
10-14	1	0	0	1	2	2
15-19	4	3	3	3	3	3
20-24	7	13	13	11	14	6
25-34	17	18	17	13	13	11
35-44	22	27	29	25	22	21
45-54	26	28	27	22	33	34
55-64	15	9	15	17	24	19
65-74	9	4	11	7	5	9
75-84	7	7	9	7	5	7
85+	0	0	2	5	3	0
Total	108	109	126	113	124	112

Year	Deaths by Suicide ⁽³⁾		Age-Adjusted Rate per 100,000 ⁽³⁾	
	Male	Female	Male	Female
2000	77	23	21.0	5.7
2001	83	25	23.0	6.0
2002	90	18	23.6	4.3
2003	95	31	25.9	7.3
2004	94	25	25.4	5.8
2005	94	30	23.8	6.7
AVG	88.8	25.3		

	Florida	U.S.
Seriously considered attempting suicide	11.2%	14.5%
Made a suicide plan	8.1%	11.3%
Attempted suicide	5.7%	6.9%
Suicide attempt required medical attention	2.1%	2.0%

Mechanism	0-14	15-24	25-34	35-44	45-54	55-64	65-74	75-84	85+	Total
Cut/Pierce	0	2	5	3	3	0	0	0	0	13
Firearm	0	1	0	0	3	1	0	0	0	5
Poisoning	3	72	94	89	75	35	8	6	1	383
Suffocation	0	1	0	0	0	0	0	0	0	1
Unspecified	0	0	0	1	0	0	0	0	0	1
Total	3	76	99	93	81	36	8	6	1	409*

* Column total does not match Total as not all Mechanism categories are listed.

- Office of Economic and Demographic Research, Florida Legislature, extracted 9-12-08 from <http://edr.state.fl.us/population.htm>, County Profiles.
- Florida Office of Vital Statistics, CHARTS, extracted 9-12-08 from <http://www.floridacharts.com/charts/>.
- Centers for Disease Control and Prevention, National Center for Health Statistics. Compressed Mortality File 1999-2005. CDC WONDER On-line Database, compiled from Compressed Mortality File 1999-2005, extracted 9/12/08.
- Florida Vital Statistics Annual Report 2000-2006, Table D-11, extracted 8-5-08.
- Youth Risk Behavior Surveillance, CDC 2008.
- Florida Department of Health, Office of Injury Prevention, extracted 9/10/08. an age-adjusted rate