

Deaths From Suicide (X60-X84, Y870), Florida Residents
All Races, All Sexes, All Ethnicities, 1995-2008

Count Data

	1995	1996	1997	1998	1999	2000	2001	2002	2003	2004	2005	2006	2007	2008
10 to 14	17	17	16	8	7	13	17	12	4	16	19	4	6	7
10 to 19	84	86	85	97	72	71	87	87	62	88	101	73	76	78
10 to 24	232	232	197	207	172	202	208	206	199	223	225	204	231	231
15 to 19	67	69	69	89	65	58	70	75	58	72	82	69	70	71
15 to 24	215	215	181	199	165	189	191	194	195	207	206	200	225	224
25 to 34	343	320	329	303	297	251	318	277	303	283	293	293	317	332
25 to 64	1,298	1,346	1,328	1,379	1,341	1,377	1,517	1,581	1,567	1,641	1,582	1,654	1,779	1,916
35 to 64	955	1,026	999	1,076	1,044	1,126	1,199	1,304	1,264	1,358	1,289	1,361	1,462	1,583
65 up	607	564	564	567	552	554	564	544	526	516	500	552	559	575
75 up	321	352	333	330	308	334	329	319	312	318	300	319	313	325
85 up	94	102	88	95	89	106	105	90	96	98	104	92	99	95
All Ages	2,139	2,144	2,097	2,156	2,068	2,136	2,290	2,332	2,294	2,382	2,308	2,410	2,570	2,724

Population Data

	1995	1996	1997	1998	1999	2000	2001	2002	2003	2004	2005	2006	2007	2008
10 to 14	920,021	944,092	966,214	991,289	1,030,792	1,061,958	1,071,975	1,085,281	1,111,306	1,151,029	1,168,628	1,176,020	1,182,691	1,167,486
10 to 19	1,773,653	1,831,393	1,888,820	1,947,639	2,019,904	2,084,677	2,126,374	2,158,644	2,213,539	2,298,215	2,346,055	2,373,459	2,397,704	2,378,243
10 to 24	2,629,111	2,680,621	2,749,137	2,824,715	2,923,870	3,023,776	3,110,923	3,171,634	3,253,654	3,438,135	3,503,220	3,585,426	3,605,860	3,615,627
15 to 19	853,632	887,301	922,606	956,350	989,112	1,022,719	1,054,399	1,073,363	1,102,233	1,147,186	1,177,427	1,197,439	1,215,013	1,210,757
15 to 24	1,709,090	1,736,529	1,782,923	1,833,426	1,893,078	1,961,818	2,038,948	2,086,353	2,142,348	2,287,106	2,334,592	2,380,124	2,423,169	2,439,814
25 to 34	2,125,881	2,118,987	2,103,482	2,078,343	2,071,054	2,086,402	2,083,688	2,074,277	2,126,715	2,110,238	2,176,924	2,234,288	2,281,301	2,285,535
25 to 64	7,240,316	7,418,211	7,609,326	7,792,464	8,020,419	8,245,186	8,407,824	8,619,188	8,808,410	9,054,921	9,268,865	9,490,886	9,649,590	9,745,077
35 to 64	5,114,435	5,299,224	5,505,844	5,714,121	5,949,365	6,158,784	6,324,136	6,544,911	6,681,695	6,944,683	7,091,941	7,256,598	7,368,289	7,388,849
65 up	2,643,571	2,694,385	2,726,459	2,750,522	2,774,918	2,818,453	2,868,900	2,965,587	3,024,561	3,001,631	3,062,401	3,166,487	3,210,261	3,260,235
75 up	1,180,143	1,224,315	1,261,131	1,293,588	1,329,490	1,362,866	1,396,780	1,463,274	1,488,622	1,535,558	1,580,678	1,621,774	1,634,965	1,672,657
85 up	273,354	285,165	296,959	309,527	322,779	332,995	341,074	366,791	369,727	434,233	417,792	443,945	460,206	500,533
All Ages	14,405,514	14,701,293	15,011,697	15,309,968	15,679,606	16,074,896	16,412,296	16,772,201	17,164,199	17,613,368	18,018,497	18,440,700	18,731,287	18,812,155

Rates Per 100,000 Population

	1995	1996	1997	1998	1999	2000	2001	2002	2003	2004	2005	2006	2007	2008
10 to 14	1.8	1.8	1.7	0.8	0.7	1.2	1.6	1.1	0.4	1.4	1.6	0.3	0.5	0.6
10 to 19	4.7	4.7	4.5	5.0	3.6	3.4	4.1	4.0	2.8	3.8	4.3	3.1	3.2	3.3
10 to 24	8.8	8.7	7.2	7.3	5.9	6.7	6.7	6.5	6.1	6.5	6.4	5.7	6.4	6.4
15 to 19	7.8	7.8	7.5	9.3	6.6	5.7	6.6	7.0	5.3	6.3	7.0	5.8	5.8	5.9
15 to 24	12.6	12.4	10.2	10.9	8.7	9.6	9.4	9.3	9.1	9.1	8.8	8.4	9.3	9.2
25 to 34	16.1	15.1	15.6	14.6	14.3	12.0	15.3	13.4	14.2	13.4	13.5	13.1	13.9	14.5
25 to 64	17.9	18.1	17.5	17.7	16.7	16.7	18.0	18.3	17.8	18.1	17.1	17.4	18.4	19.7
35 to 64	18.7	19.4	18.1	18.8	17.5	18.3	19.0	19.9	18.9	19.6	18.2	18.8	19.8	21.4
65 up	23.0	20.9	20.7	20.6	19.9	19.7	19.7	18.3	17.4	17.2	16.3	17.4	17.4	17.6
75 up	27.2	28.8	26.4	25.5	23.2	24.5	23.6	21.8	21.0	20.7	19.0	19.7	19.1	19.4
85 up	34.4	35.8	29.6	30.7	27.6	31.8	30.8	24.5	26.0	22.6	24.9	20.7	21.5	19.0
All Ages	14.8	14.6	14.0	14.1	13.2	13.3	14.0	13.9	13.4	13.5	12.8	13.1	13.7	14.5

Calculations

10 Year Percent Change 1999-2008	
10 to 14	-11.71%
10 to 19	-7.99%
10 to 24	8.61%
15 to 19	-10.77%
15 to 24	5.34%
25 to 34	1.29%
25 to 64	17.59%
35 to 64	22.09%
65 up	-11.34%
75 up	-16.13%
85 up	-31.17%
All Ages	9.79%

5 Year Percent Change 2004-2008	
10 to 14	-56.87%
10 to 19	-14.35%
10 to 24	-1.50%
15 to 19	-6.57%
15 to 24	1.44%
25 to 34	8.32%
25 to 64	8.49%
35 to 64	9.56%
65 up	2.60%
75 up	-6.18%
85 up	-15.90%
All Ages	7.07%

2010 Target (2001 rate less 33%)
1.1
2.7
4.5
4.4
6.2
10.2
12.0
12.6
13.1
15.7
20.5
9.3

2010 33% Reduction Progress: 2001-2008 % Change
-62.19%
-19.84%
-4.44%
-11.67%
-1.99%
-4.82%
8.97%
13.00%
-10.29%
-17.51%
-38.35%
3.78%

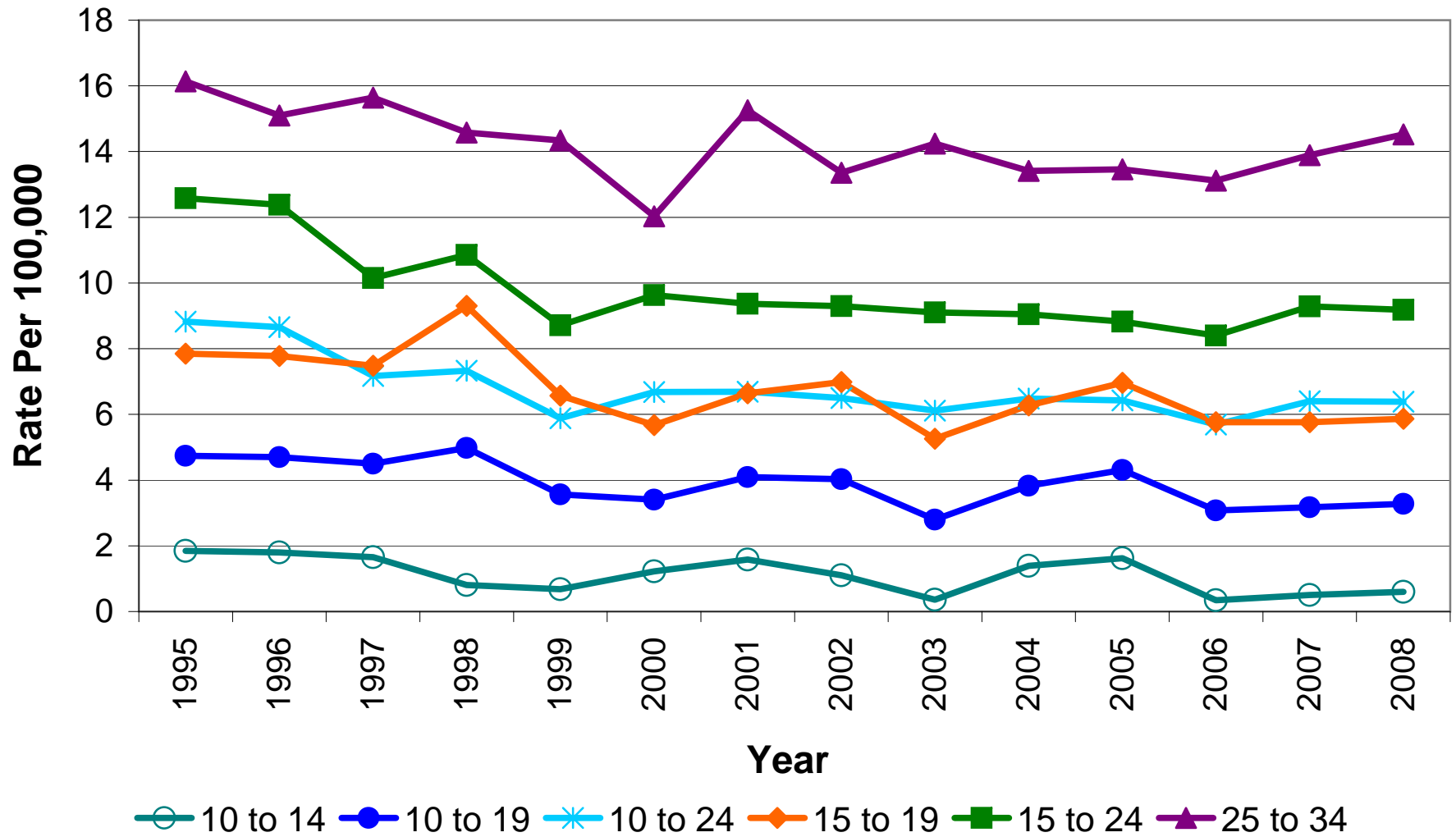
Percent Reduction Remaining to Meet 2010 Target
MET
-13.49%
-28.89%
-21.66%
-31.34%
-28.52%
-42.30%
-46.34%
-23.05%
-15.82%
MET
-37.11%

2007-2008	
10 to 14	18.19%
10 to 19	3.47%
10 to 24	-0.27%
15 to 19	1.79%
15 to 24	-1.12%
25 to 34	4.54%
25 to 64	6.65%
35 to 64	7.98%
65 up	1.29%
75 up	1.49%
85 up	-11.77%
All Ages	5.54%

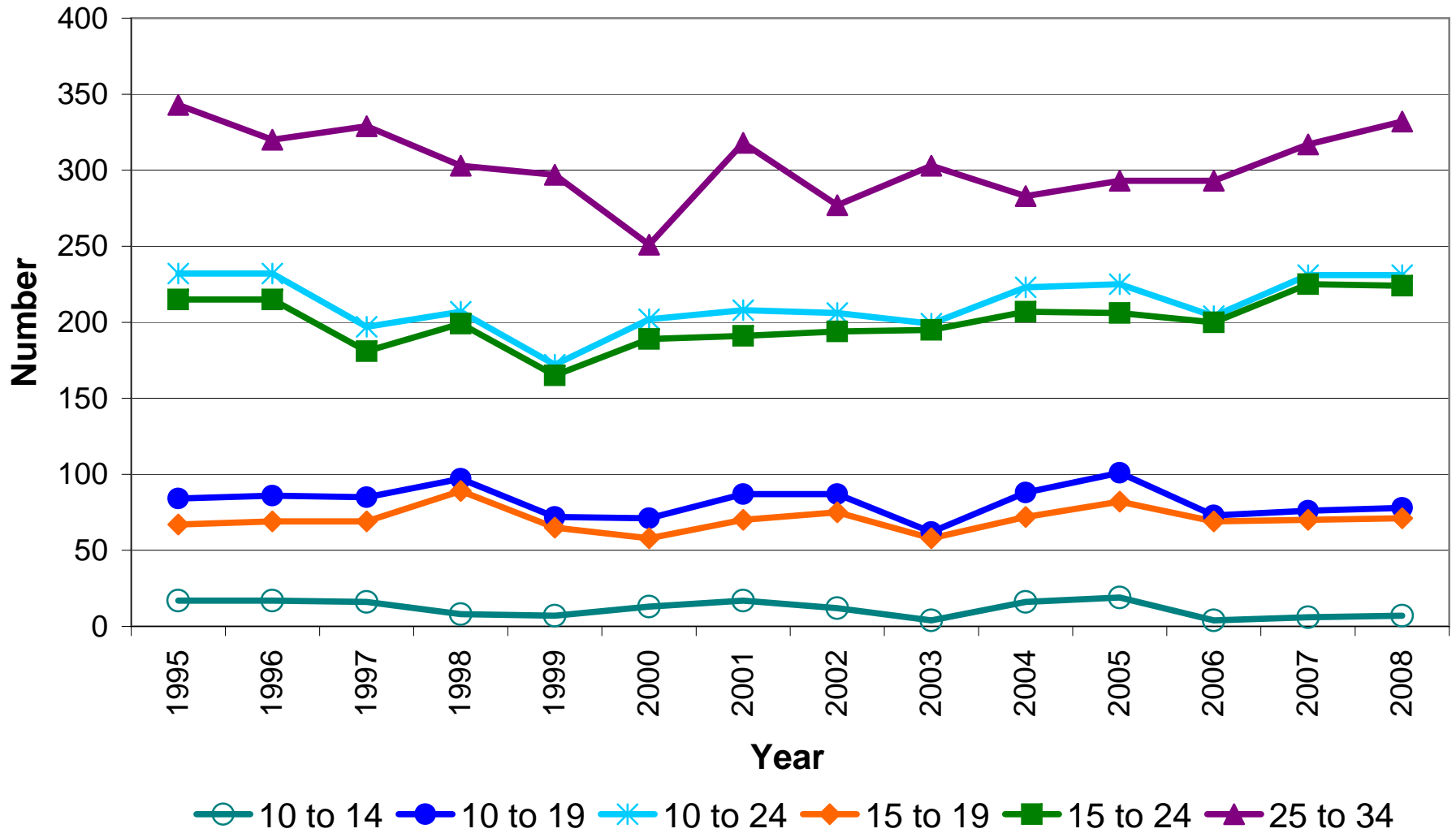
Data Sources: Death certificate and population data via www.FloridaCHARTS.com, Florida Department of Health

Data for 1970-78, 1979-98, and 1999-present are not fully comparable due to changes in coding causes of death. Consequently, increases or decreases in 1979 and 1999 may not be due to changes in disease trends but rather coding changes.

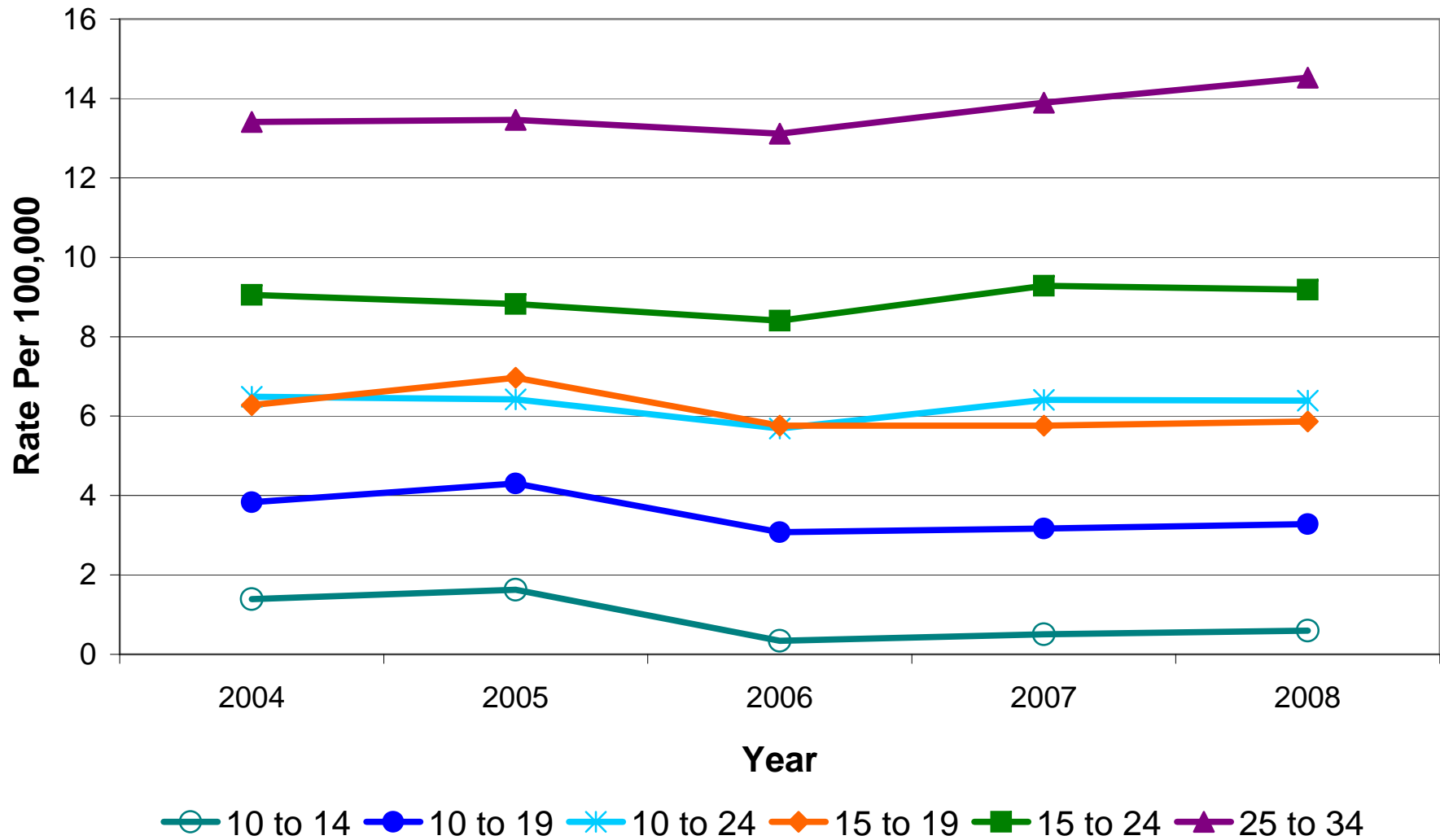
**Suicide Rates Per 100,000 Florida Residents,
Select Age Groups, 1995-2008**



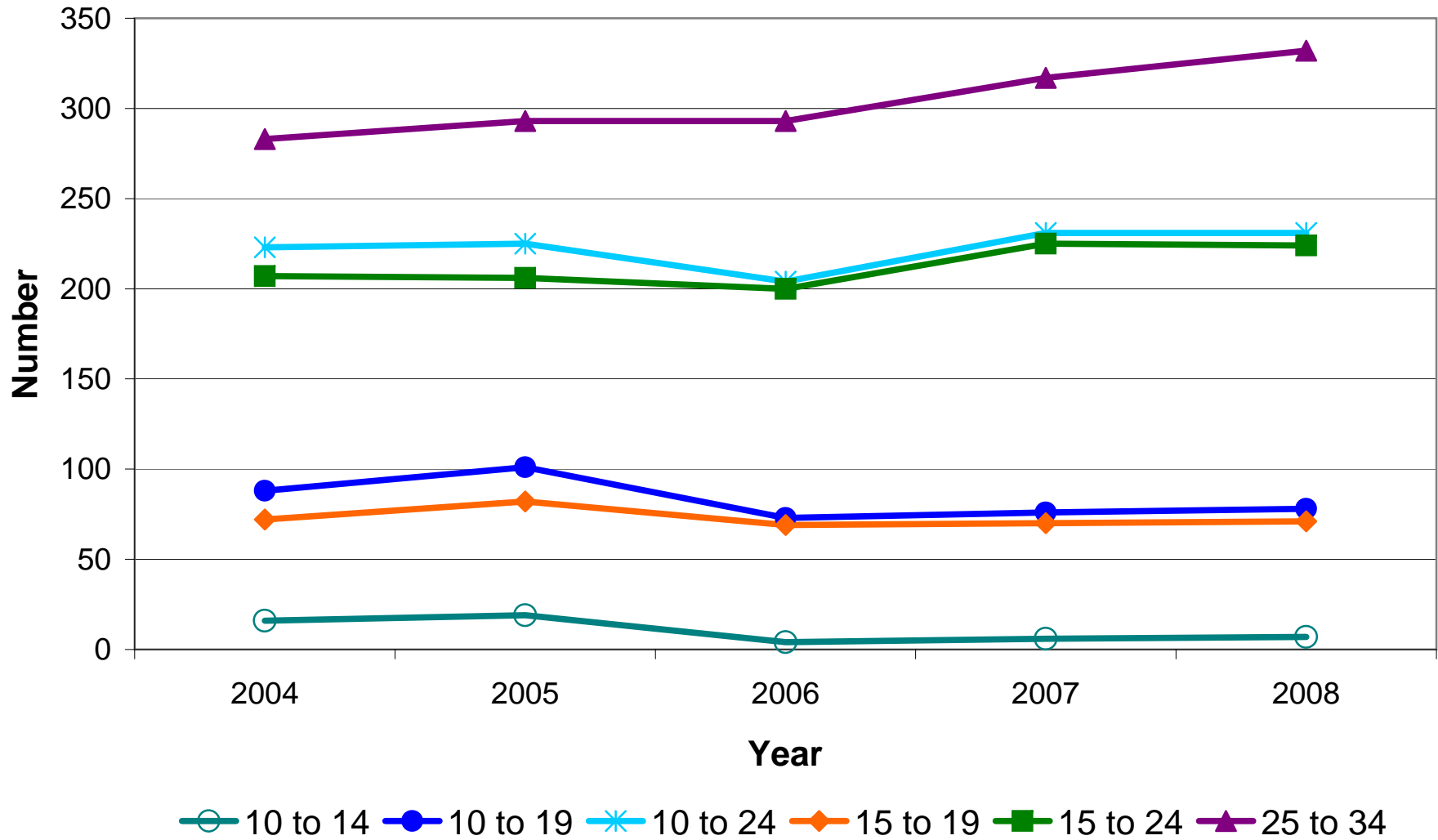
Number of Suicides among Florida Residents, Select Age Groups, 1995-2008



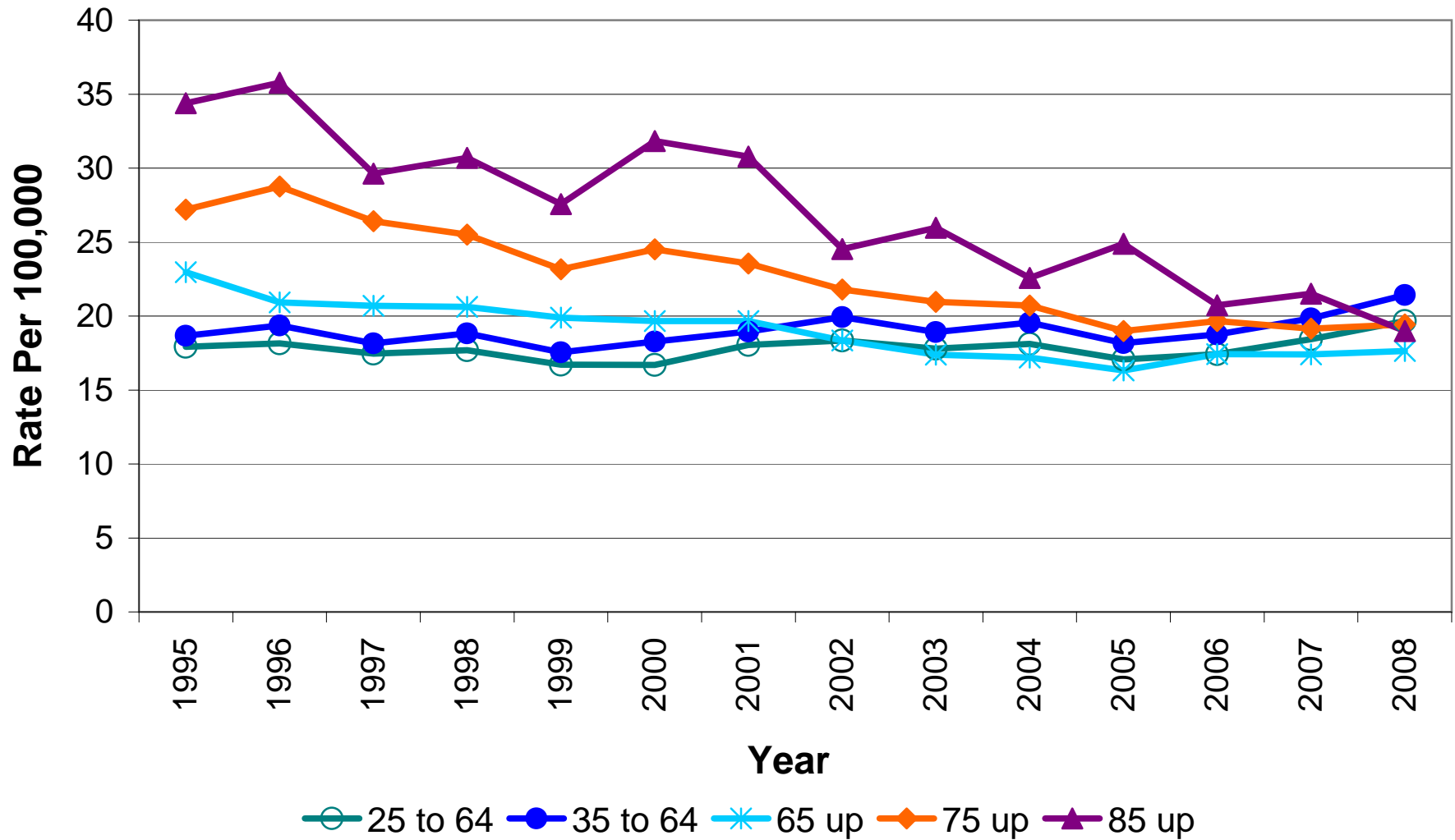
Suicide Rates Per 100,000 Florida Residents, Select Age Groups, 2004-2008



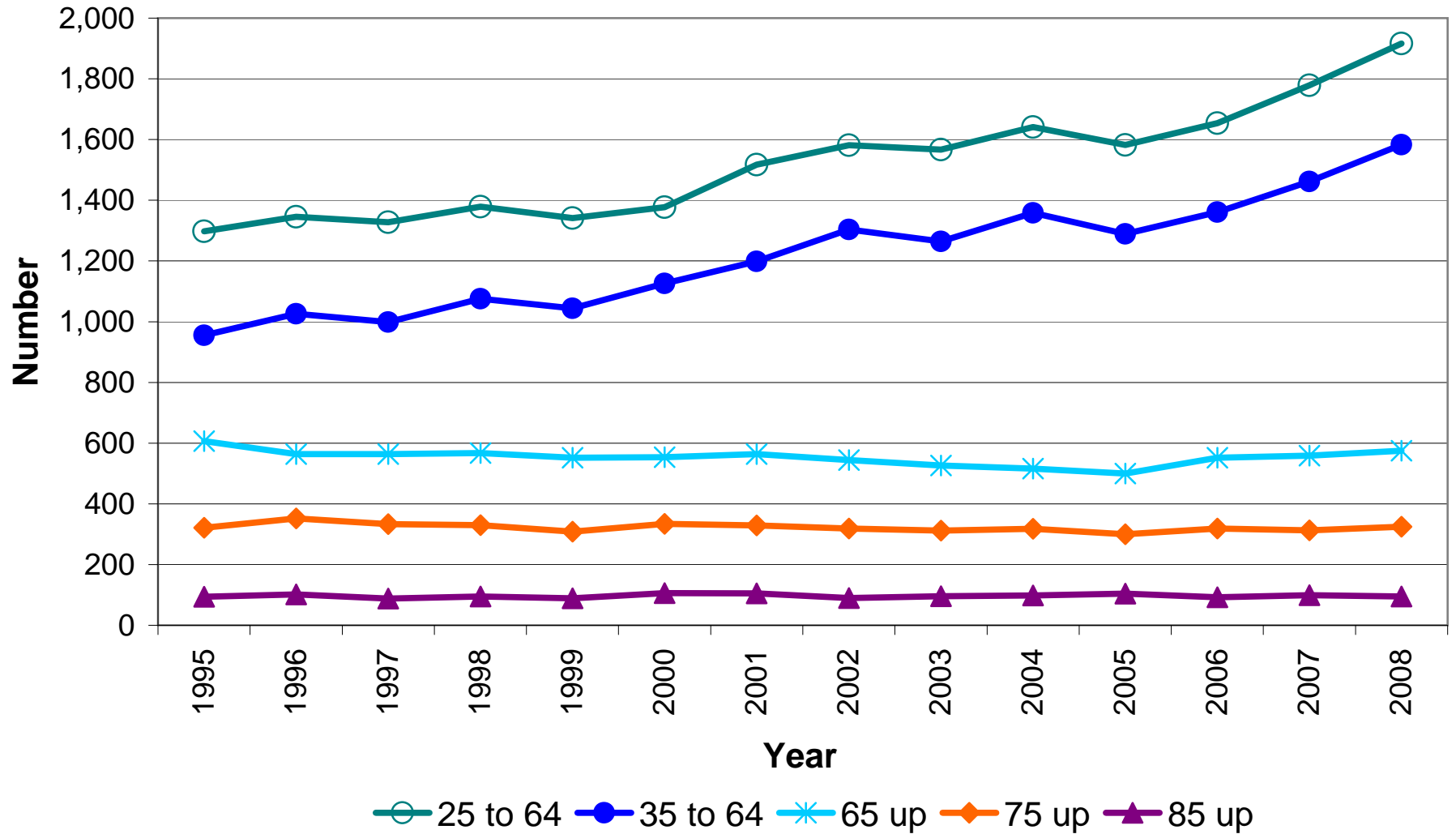
Number of Suicides among Florida Residents, Select Age Groups, 2004-2008



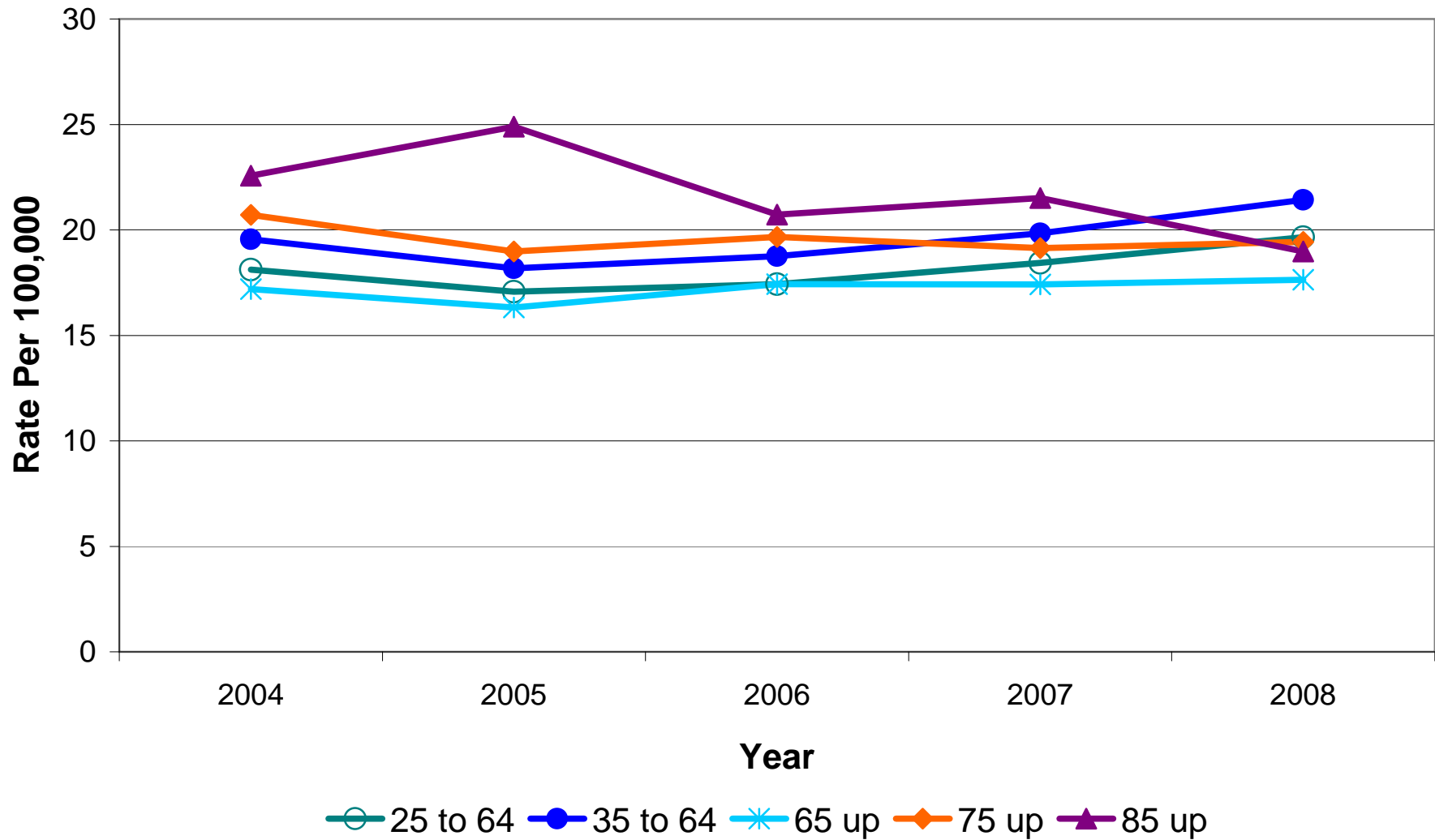
Suicide Rates Per 100,000 Florida Residents, Select Age Groups, 1995-2008



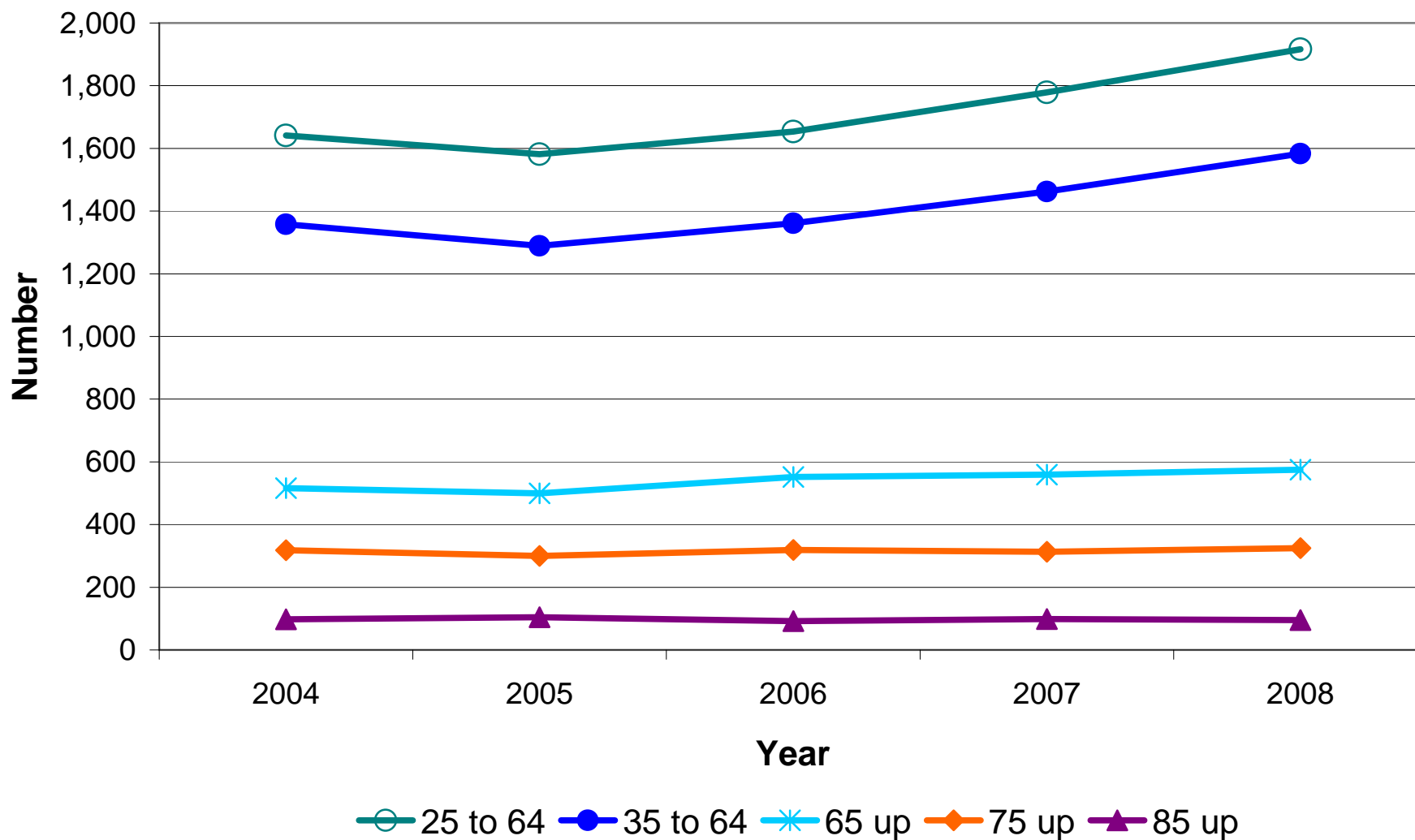
Number of Suicides among Florida Residents, Select Age Groups, 1995-2008



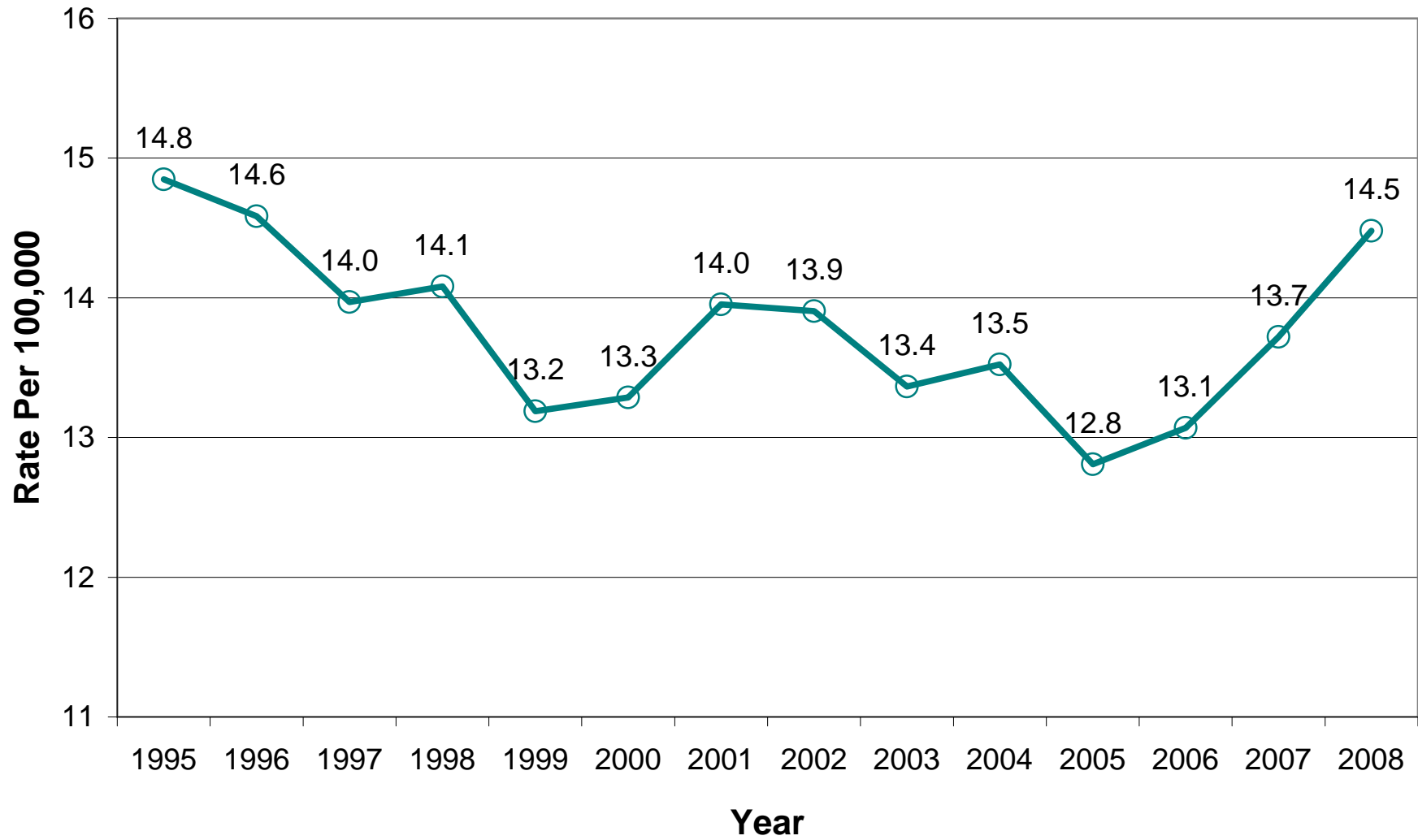
Suicide Rates Per 100,000 Florida Residents, Select Age Groups, 2004-2008



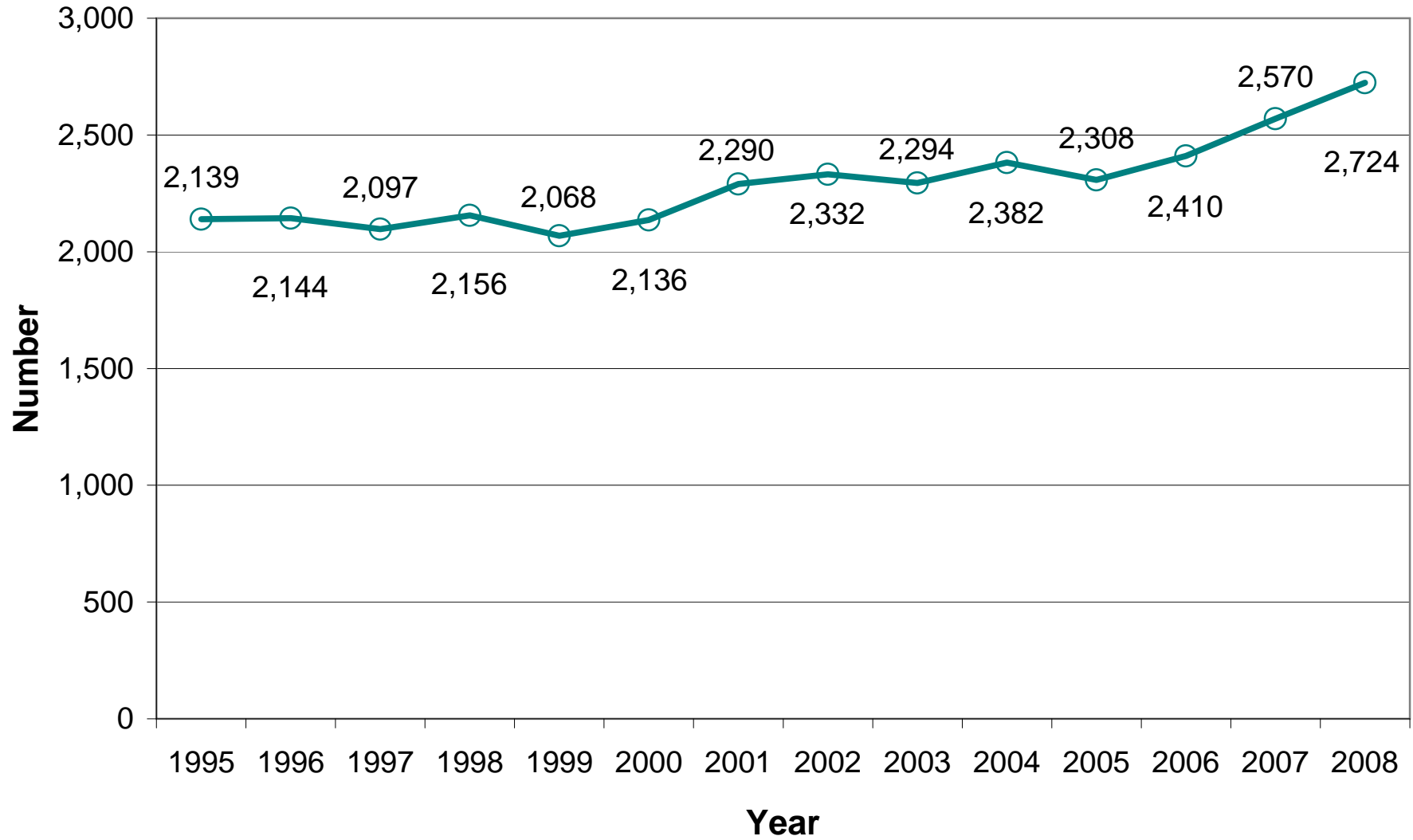
Number of Suicides among Florida Residents, Select Age Groups, 2004-2008



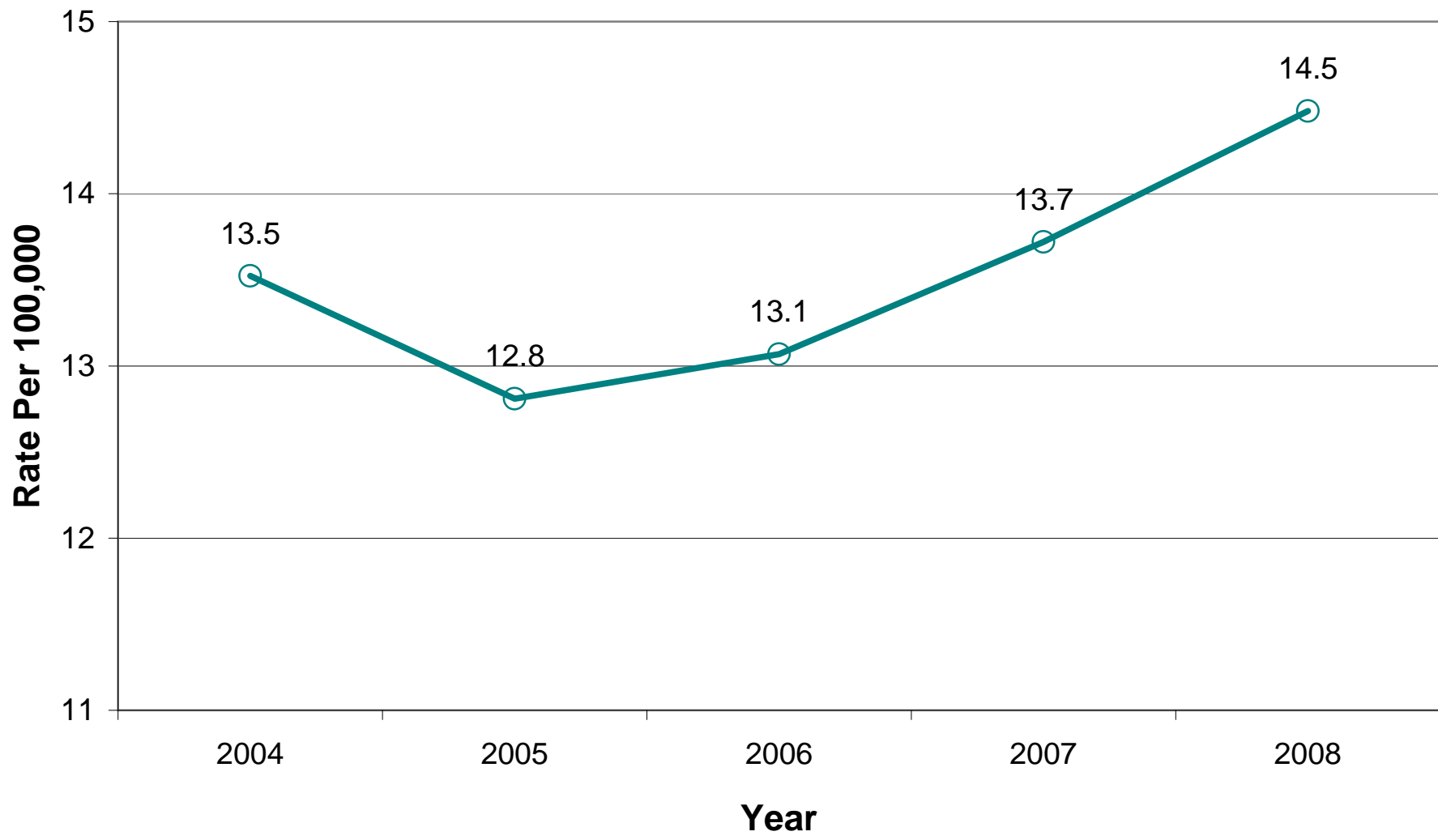
Suicide Rates Per 100,000 Florida Residents, 1995-2008



Number of Suicides among Florida Residents, 1995-2008



Suicide Rates Per 100,000 Florida Residents, 2004-2008



Number of Suicides among Florida Residents, 2004-2008

